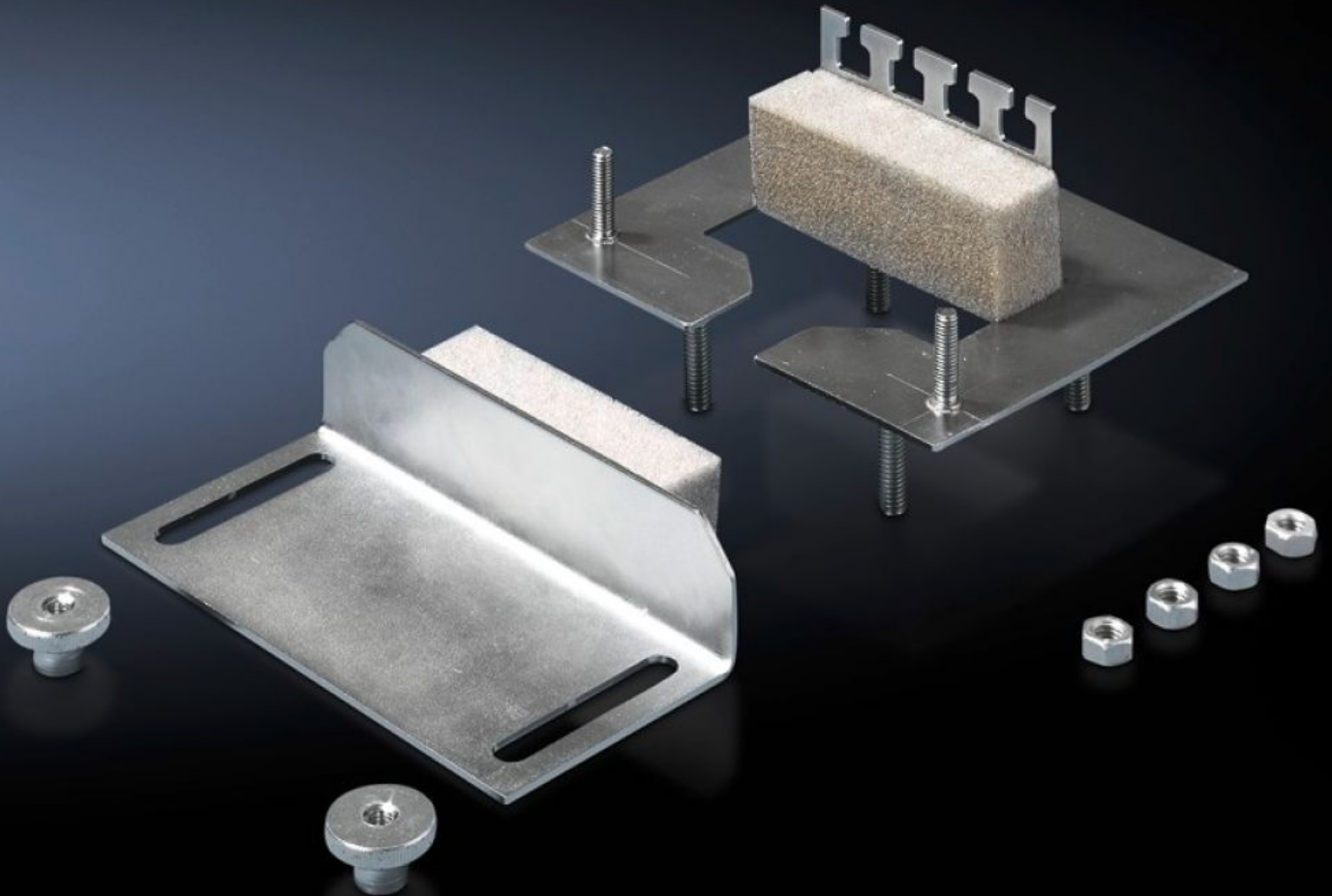


Rittal – The System.

Faster – better – everywhere.



CP 6052.500 Cable gland module

State: 08.04.2026 (Source: rittal.com/bg-bg)

ENCLOSURES

POWER DISTRIBUTION

CLIMATE CONTROL

IT INFRASTRUCTURE

SOFTWARE & SERVICES

FRIEDHELM LOH GROUP



CP 6052.500 - Cable gland module for support arm connection Ø 130 mm

Use of the mounting cut-out for support arm connection Ø 130 mm, round, with enclosures mounted on the wall, for sealed cable entry. May also be mounted retrospectively with the cables already inserted. Fitted with T-heads for cable clamping. Particularly well-suited to cables with identical crosssections.



Features

Model No.	CP 6052.500
Product description	Use of the mounting cut-out for support arm connection Ø 130 mm, round, with enclosures mounted on the wall, for sealed cable entry. May also be mounted retrospectively with the cables already inserted. Fitted with T-heads for cable clamping. Particularly well-suited to cables with identical crosssections.
Benefits	May also be mounted retrospectively with the cables already inserted. Particularly well-suited to cables with identical cross-sections with T-heads for cable clamping
Material	Sheet steel
Surface finish	Zinc-plated
Supply includes	Assembly parts
IP protection category to IEC 60529	IP 55 with correct installation and cable entry
Packs of	1 pc(s).
Net weight	0,32 kg

Features

Gross weight	0,341 kg
PCF per pack (cradle-to-gate)	1.3 kg CO2 eq (Cat B)
Note on PCF category	Category B: PCF value (cradle-to-gate) based on the product weight, approximately calculated and self-declared
Customs tariff number	73269098
ETIM 9	EC000879
ECLASS 8.0	27069216
Product description	CP Cable gland module, for support arm connection Ø 130 mm