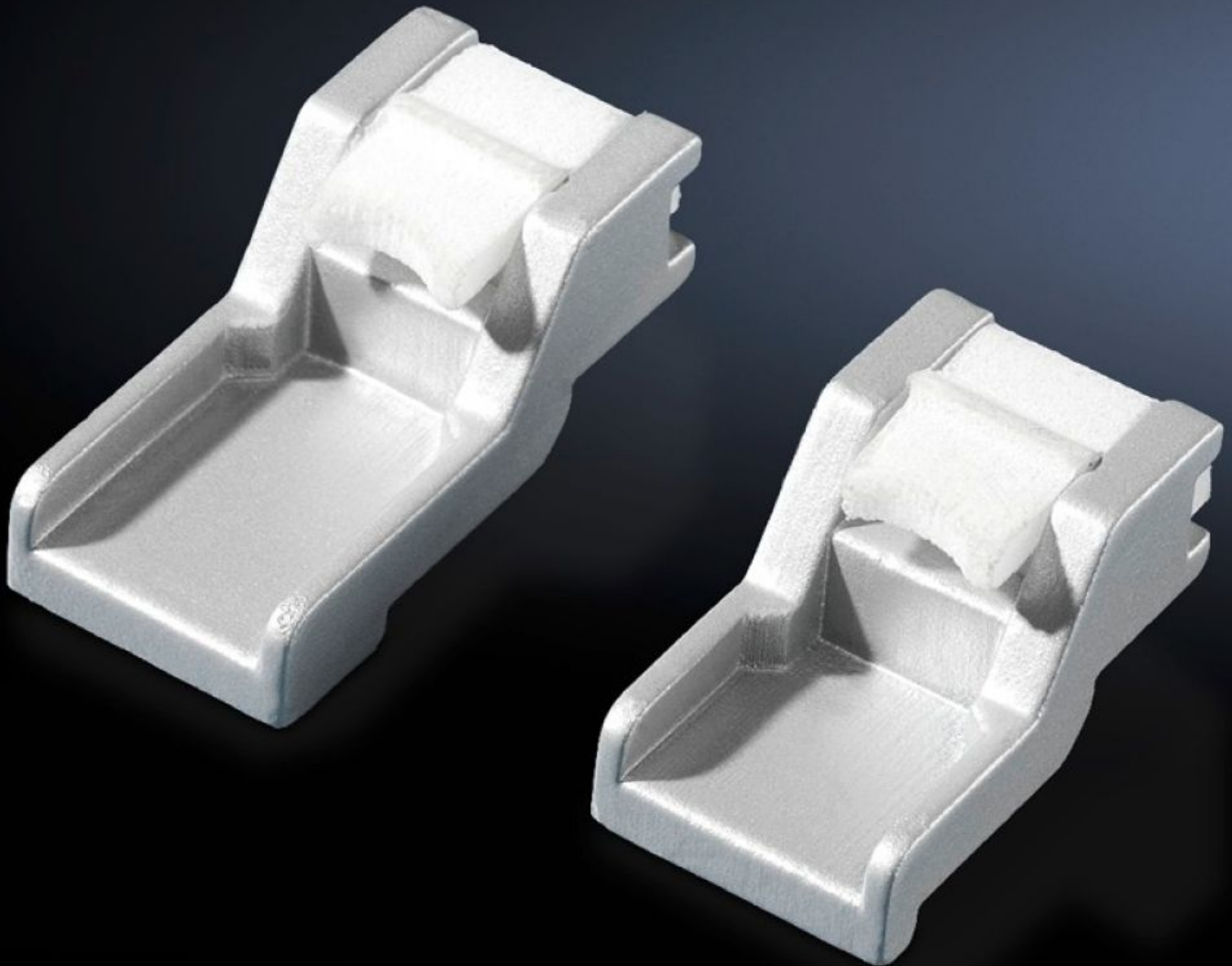


# Rittal – The System.

Faster – better – everywhere.



## CP 6053.300 Mounting kit

State: 23.05.2026 (Source: [rittal.com/bg-bg](http://rittal.com/bg-bg))

ENCLOSURES

POWER DISTRIBUTION

CLIMATE CONTROL

IT INFRASTRUCTURE

SOFTWARE & SERVICES

FRIEDHELM LOH GROUP



# CP 6053.300 - Mounting kit for Comfort Panel

For the installation of aluminium front panels, command panels and keyboards.

## Features

Model No.	CP 6053.300
Design	For screw clamp
Product description	For the installation of aluminium front panels, command panels and keyboards.
Supply includes	8 medium retaining claws, 8 short retaining claws, 4 long retaining claws.
Direct Integration	Siemens Sinumerik: OP 010, OP 010 C, OP 012, TP 012, OP 015, OP 015 A, MCP 483 C, MCP 483, PP 012, PP 012 extension, MCP, KB 483 C, Qwerty 19" Siemens Simatic: TP 900 Comfort, KP 900 Comfort, TP 1200 Comfort, KTP 1000 Basic, KTP 1500 Basic Panel PC 477C, 577C, 677C: 12.1" keys, 12.1" Touch, 15.1" keys, 15.1" Touch, 19" Touch, 22" Touch (2 packs are required) MP 377 12" Touch, MP 377 15" Touch, MP 377 19" Touch Industrial Flat Panel: IFP 1200 Touch, IFP 1500 Touch, IFP 1200 Key, IFP 1500 Key, IFP 1900 Touch, IFP 2200 Touch Industrial Thin Client: ITC 1200, ITC 1500, ITC 1900, ITC 2200 B & R: Automation Panel, Panel PC
Packs of	1 pc(s).
Net weight	0,28 kg
Gross weight	0,285 kg
Customs tariff number	79070000
ETIM 9	EC002625
ECLASS 8.0	27189234
Product description	CP Mounting kit, for Comfort-Panel, for screw clamp