

# Rittal – The System.

Faster – better – everywhere.



## IW 6141.200 Pedestal, complete

State: 14.05.2026 (Source: [rittal.com/bg-bg](http://rittal.com/bg-bg))

ENCLOSURES

POWER DISTRIBUTION

CLIMATE CONTROL

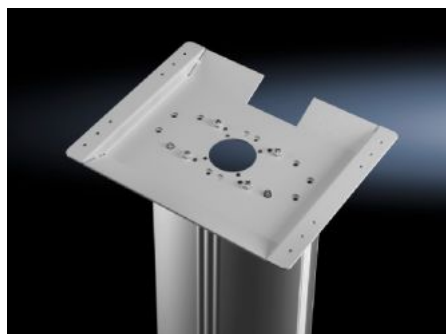
IT INFRASTRUCTURE

SOFTWARE & SERVICES

FRIEDHELM LOH GROUP



# IW 6141.200 - Pedestal, complete for IW worktops



## Features

Model No.	IW 6141.200
Design	Stationary
Benefits	Reliable protection of cable management
Colour	RAL 7035
Supply includes	Cross member Vertical aluminium moulding, may be opened Worktop attachment
Load capacity (static)	25 kg
Dimensions	Width: 600 mm Height: 946 mm Depth: 660 mm
Packs of	1 pc(s).
Net weight	28,5 kg
Gross weight	31,2 kg
Customs tariff number	94039100
ETIM 9	EC002534
ECLASS 8.0	27182604

# Features

---

Product description

IW Industrial workstation, pedestal, complete, WHD: 600x946x660 mm, for IW worktops