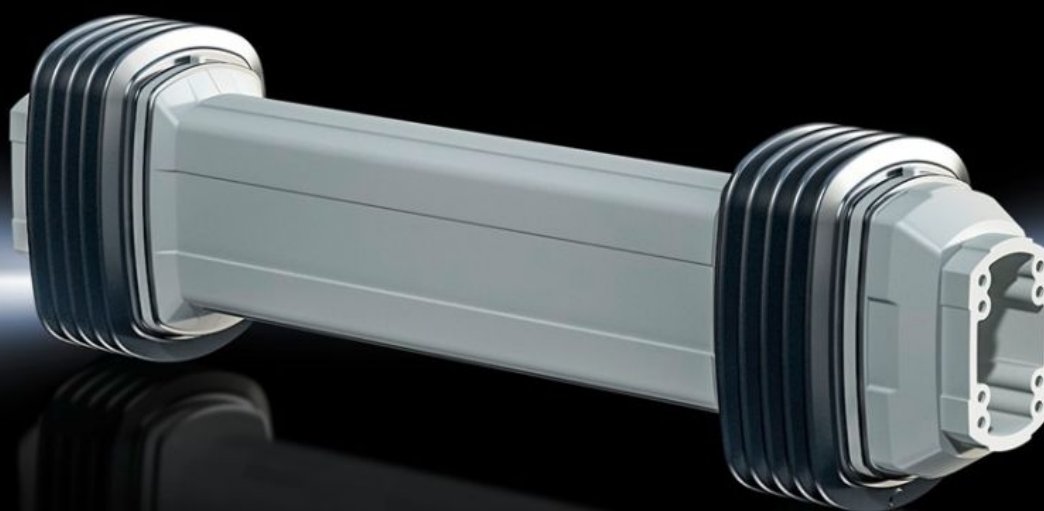


Rittal – The System.

Faster – better – everywhere.



CP 6212.120

Support section, height-adjustable

State: 18.08.2025 (Source: [rittal.com/bg-bg](https://www.rittal.com/bg-bg))

ENCLOSURES

POWER DISTRIBUTION

CLIMATE CONTROL

IT INFRASTRUCTURE

SOFTWARE & SERVICES

FRIEDHELM LOH GROUP



CP 6212.120 - Support section, height-adjustable for support arm systems

The new height-adjustable support section ensures that you always have a good view of the key parameters in human/machine interaction. The system can be fitted directly to the components in the CP 120 support arm system without any further adaptation on the wall side, and on the enclosure side on support arm system CP 120.



Features

Model No.	CP 6212.120
Product description	The new height-adjustable support section ensures that you always have a good view of the key parameters in human/machine interaction. The system can be fitted directly to the components in the CP 120 support arm system without any further adaptation on the wall side, and on the enclosure side on support arm system CP 60 or CP 120 depending on the model.
Benefits	<div>Support arm holds securely in any position</div> <div>Additional fixing with clamping lever if required</div> <div>Precise coordination to the suspended load via an adjusting screw at the front of the support section</div> <div>Adjusting screw can be accessed without dismantling any components</div> <div>Large cable tray and cable cable routing at the rotation points for safety</div> <div>Removable side panel for easy access to cable entry</div> <div>Tilting angle of the mounted enclosure is identical in every height position</div> <div>Cables with connectors such as DVI, VGA are easily inserted</div> <div>Broad weight range from 4 to 60 kg with three systems. (Weight range applies to configured enclosure and vertical support section.)</div>

Features

Technical specifications	Cable tray: 43 x 21 mm (W x H), max. connector gland: 59 x 17 mm (W x H) Superior ergonomic design, thanks to adjustment range 600 mm (± 300 mm)
Applications	For tall and short operators For seated and standing work
Material	Joint parts: Cast aluminium Concertina section: Plastic
General colour	RAL 7035
Colour	RAL 7035
Supply includes	Assembly parts
Length	790 mm
Connection options enclosure	CP 120
Connection options wall / machine	CP 120
Note	In combination with support support section, height adjustable observe: When using an intermediate hinge, the height-adjustable support section should always be inserted in the closest horizontal position to the enclosure.
Dimensions	Length: 790 mm
Load capacity	10 kg...60 kg
Note on Model No.	Maximum cross-section for cable entry 17 x 59 mm Weight range applies to configured enclosure and vertical support section.
Packs of	1 pc(s).
Net weight	13.76
Gross weight	14.2
Customs tariff number	73269060
EAN	4028177924345
ETIM 9	EC000882
ECLASS 8.0	27400556