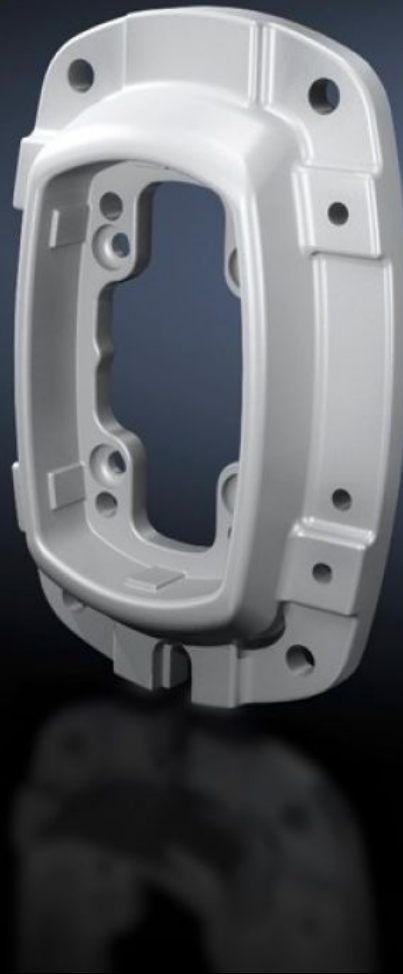


**Rittal – The System.**

Faster – better – everywhere.



**CP 6218.820**

**Wall/base mounting bracket CP  
180, small**

State: 21.05.2026 (Source: [rittal.com/bg-bg](http://rittal.com/bg-bg))

ENCLOSURES

POWER DISTRIBUTION

CLIMATE CONTROL

IT INFRASTRUCTURE

SOFTWARE & SERVICES

FRIEDHELM LOH GROUP



# CP 6218.820 - Wall/base mounting bracket CP 180, small

For rigid attachment of the support arm system to vertical or horizontal surfaces.

## Features

Model No.	CP 6218.820
Product description	For rigid attachment of the support arm system to vertical or horizontal surfaces.
Material	Wall/base mounting bracket: Cast steel
Colour	RAL 7035
Supply includes	Seals Adjusting screws Self-tapping screws for support section attachment
Rifid y/n	Yes
Packs of	1 pc(s).
Net weight	4,918 kg
Gross weight	5,177 kg
PCF per pack (cradle-to-gate)	19.1 kg CO2 eq (Cat B)
Note on PCF category	Category B: PCF value (cradle-to-gate) based on the product weight, approximately calculated and self-declared
Customs tariff number	83024900
ETIM 9	EC000882
ECLASS 8.0	27400556
Product description	CP Wall/base mounting bracket CP 180, small

## Approvals

Explanations	Manufacturer's declaration
--------------	----------------------------