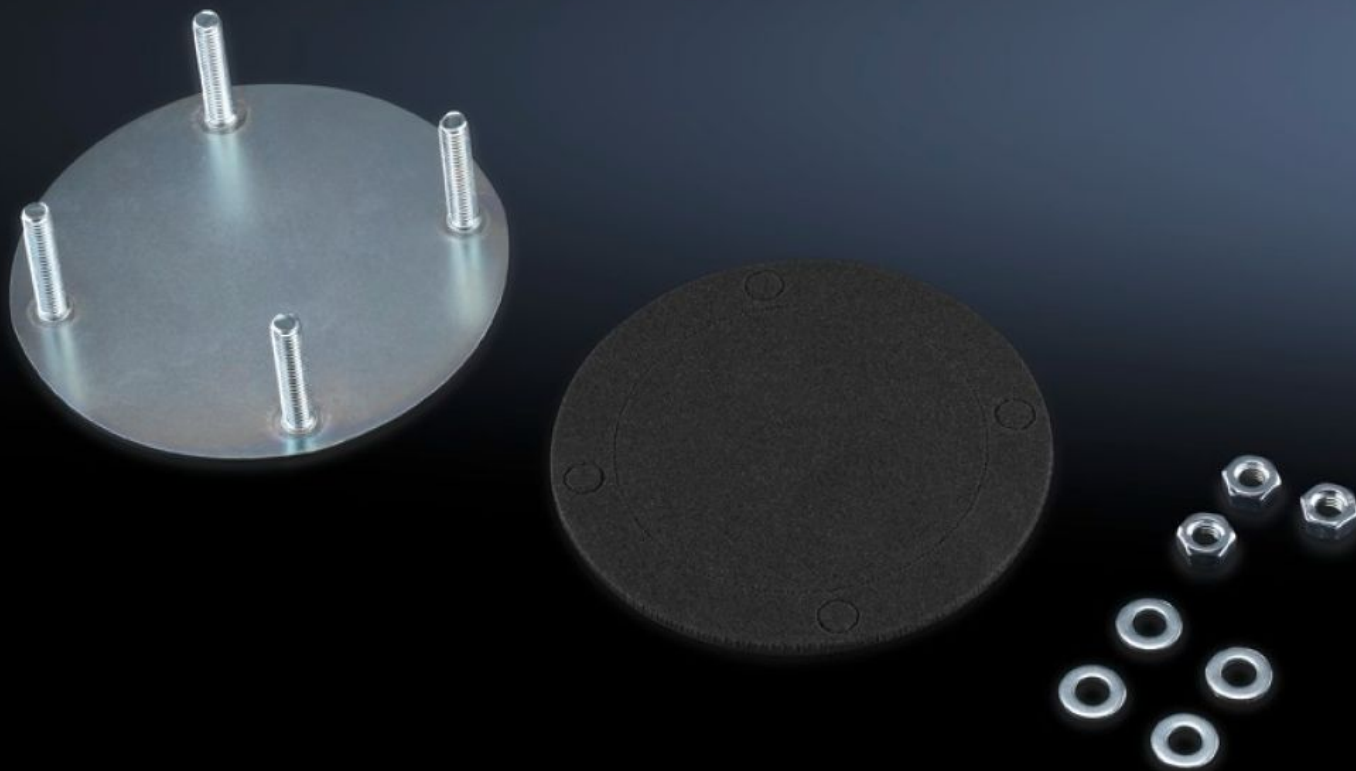
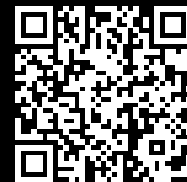


# Rittal – The System.

Faster – better – everywhere.



## CP 6505.500 Cover plate

State: 21.05.2024 (Source: [rittal.com/bg-bg](https://www.rittal.com/bg-bg))

ENCLOSURES

POWER DISTRIBUTION

CLIMATE CONTROL

IT INFRASTRUCTURE

SOFTWARE & SERVICES

FRIEDHELM LOH GROUP



# CP 6505.500 - Cover plate for support arm connection

## Features

Model No.	CP 6505.500
Product description	For secure sealing of an unrequired support arm connection in the enclosure
Material	Sheet steel
Surface finish	Zinc plated, passivated
Supply includes	Seal and assembly parts
To fit support arm connection	Ø 130 mm
Note	If there are already 2 support arm cut-outs provided with the Comfort Panel, Optipanel and Compact Panel command panels, a cover plate is included with the supply of the enclosure.
Packs of	1 pc(s).
Weight/pack	0,14 kg
Customs tariff number	94039910
EAN	4028177205895
ETIM 7.0	EC000456
ECLASS 8.0	27189263