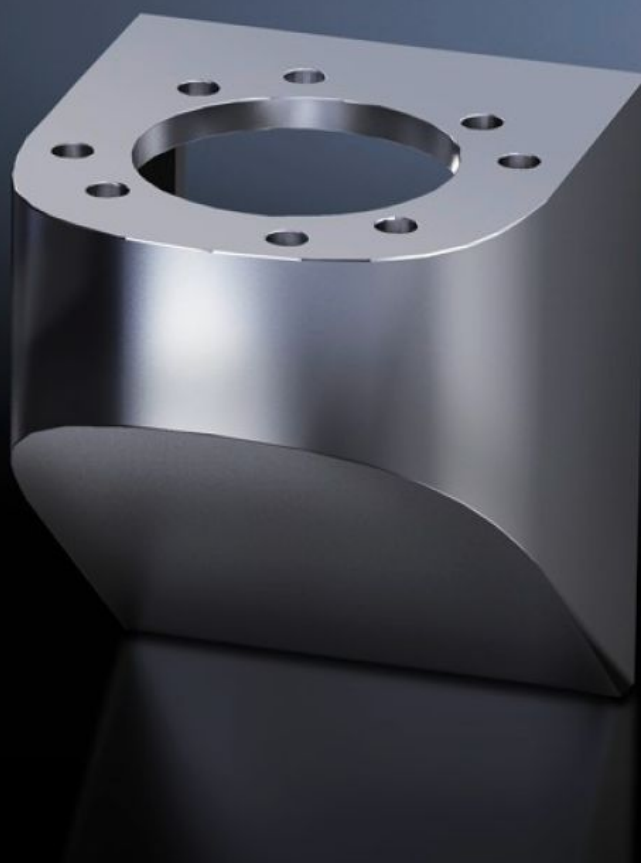


Rittal – The System.

Faster – better – everywhere.



CP 6665.000

Wall console CP 40, stainless steel

State: 11.09.2025 (Source: [rittal.com/bg-bg](https://www.rittal.com/bg-bg))

ENCLOSURES

POWER DISTRIBUTION

CLIMATE CONTROL

IT INFRASTRUCTURE

SOFTWARE & SERVICES

FRIEDHELM LOH GROUP



CP 6665.000 - Wall console CP 40, stainless steel

Features

Model No.	CP 6665.000
Design	Rear, M8 thread
Applications	With holes for mounting Base mount, swivel, CP 40, stainless steel (6663.500), with 4 screws Wall/base mount, rigid, CP 40, stainless steel (6663.000), with 4 screws and nuts
Material	Stainless steel 1.4301 (AISI 304)
IP protection category to IEC 60 529	IP 66 to IEC 60 529, 2014-09 IP X9 to IEC 60 529, 2014-09
Rifid y/n	Yes
Packs of	1 pc(s).
Net weight	1.237
Gross weight	1.44
Customs tariff number	73269098
EAN	4028177122284
ETIM 9	EC000882
ECLASS 8.0	27400556

Approvals

Explanations	Manufacturer's declaration
--------------	----------------------------