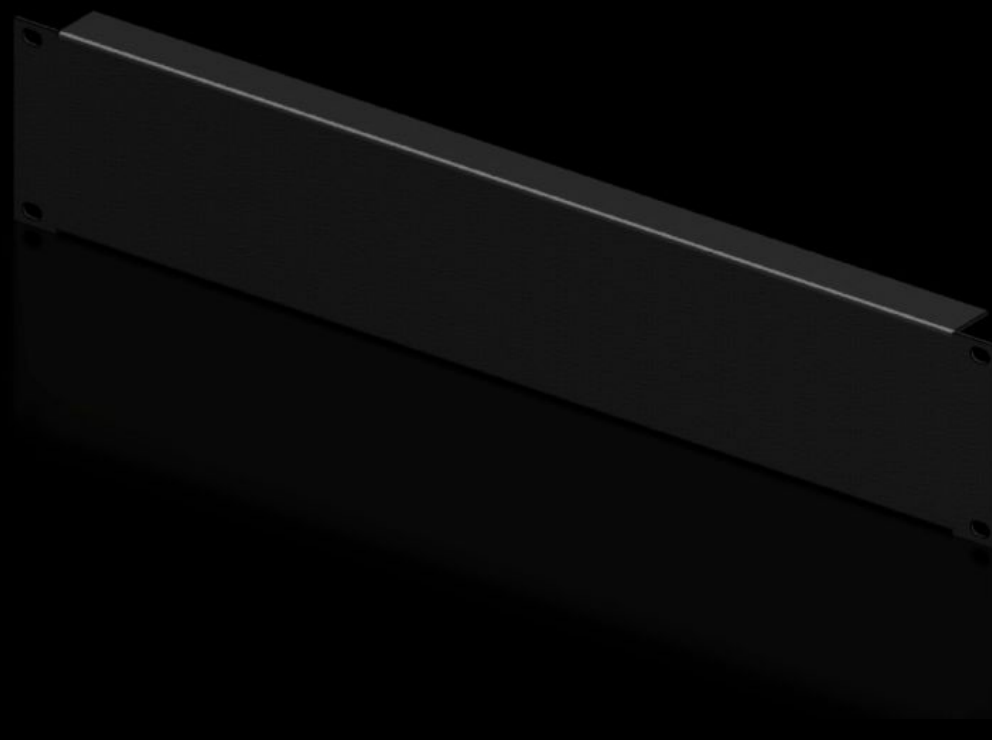
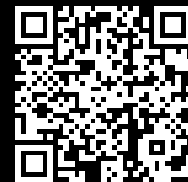


Rittal – The System.

Faster – better – everywhere.



DK 7152.005

Blanking panel, 482.6 mm (19")

State: 02.04.2026 (Source: rittal.com/bg-bg)

ENCLOSURES

POWER DISTRIBUTION

CLIMATE CONTROL

IT INFRASTRUCTURE

SOFTWARE & SERVICES

FRIEDHELM LOH GROUP



DK 7152.005 - Blanking panel, 482.6 mm (19")

As an extension cover or for population as required.



Features

Model No.	DK 7152.005
Product description	As an extension cover or for population as required.
Material	Sheet steel
Colour	RAL 9005
Build-up height	88 mm
Dimensions	Width: 482.6 mm
Units	2 U
Packs of	2 pc(s).
Net weight	1,092 kg
Gross weight	1,292 kg
PCF per pack (cradle-to-gate)	4.9 kg CO2 eq (Cat B)
Note on PCF category	Category B: PCF value (cradle-to-gate) based on the product weight, approximately calculated and self-declared
Customs tariff number	73269098
ETIM 9	EC000456
ECLASS 8.0	27189217
Product description	DK Blanking panel, 482.6 mm (19"), 2 U, Installation height: 88 mm, RAL 9005

Tender text

482.6 mm (19") blanking panel, 2 U

Used as an extension cover or for fitting separately.

Installation height: 88.2 mm, 2 U

Version: Steel sheet

Spray-finish: RAL 9005

Dimensions (W x H x D): 483 mm x 88.2 mm x 23 mm