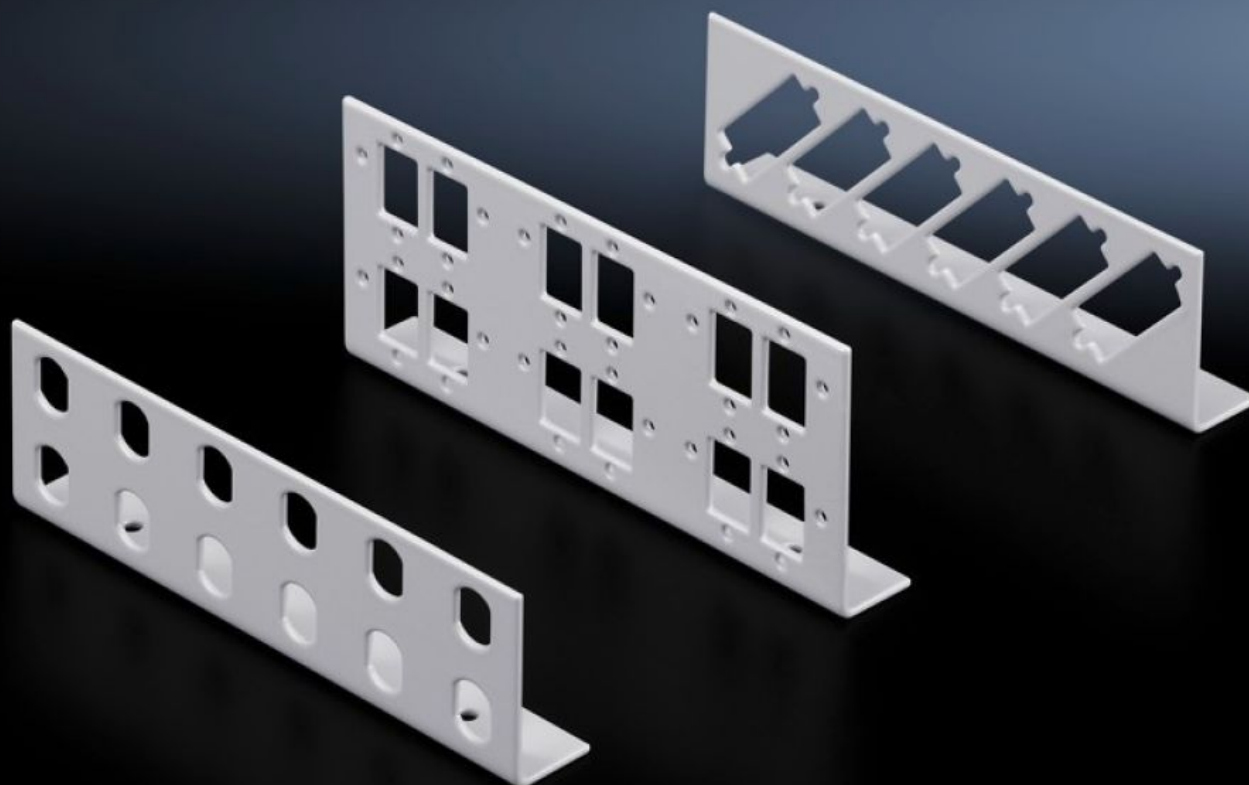


**Rittal – The System.**

Faster – better – everywhere.



**DK 7462.000**

**Patch panels for small fibre-optic distributors**

State: 16.07.2025 (Source: [rittal.com/bg-bg](https://rittal.com/bg-bg))

ENCLOSURES

POWER DISTRIBUTION

CLIMATE CONTROL

IT INFRASTRUCTURE

SOFTWARE & SERVICES

FRIEDHELM LOH GROUP



# DK 7462.000 - Patch panels for small fibre-optic distributors

Patch panel for small fibre optic distributors for ST, SC, E-2000 and E-2000 duplex couplings.

## Features

Model No.	DK 7462.000
Product description	Various patch panels with different connector types are available for individual configuration of small fibre-optic distributors.
Material	Sheet steel
Colour	RAL 7035
Supply includes	Patch panel Assembly parts
Number of patch panels per enclosure (max.)	2
Basic material	Sheet steel
for fibre-optic coupling	ST
Number of locations	Single: 12
Packs of	2 pc(s).
Net weight	0.152
Gross weight	0.169
PCF per pack (cradle-to-gate)	0.6 kg CO2 eq (Cat B)
Note on PCF category	Category B: PCF value (cradle-to-gate) based on the product weight, approximately calculated and self-declared
Customs tariff number	94039910
EAN	4028177130746
ETIM 9	EC001130
ECLASS 8.0	19170113

# Tender text

Patch panel for small fibre-optic distributor made from polycarbonate

For installing 12 x ST couplings in a small fibre-optic distributor made from polycarbonate.

Version: Sheet steel

Spray finish: RAL 7032