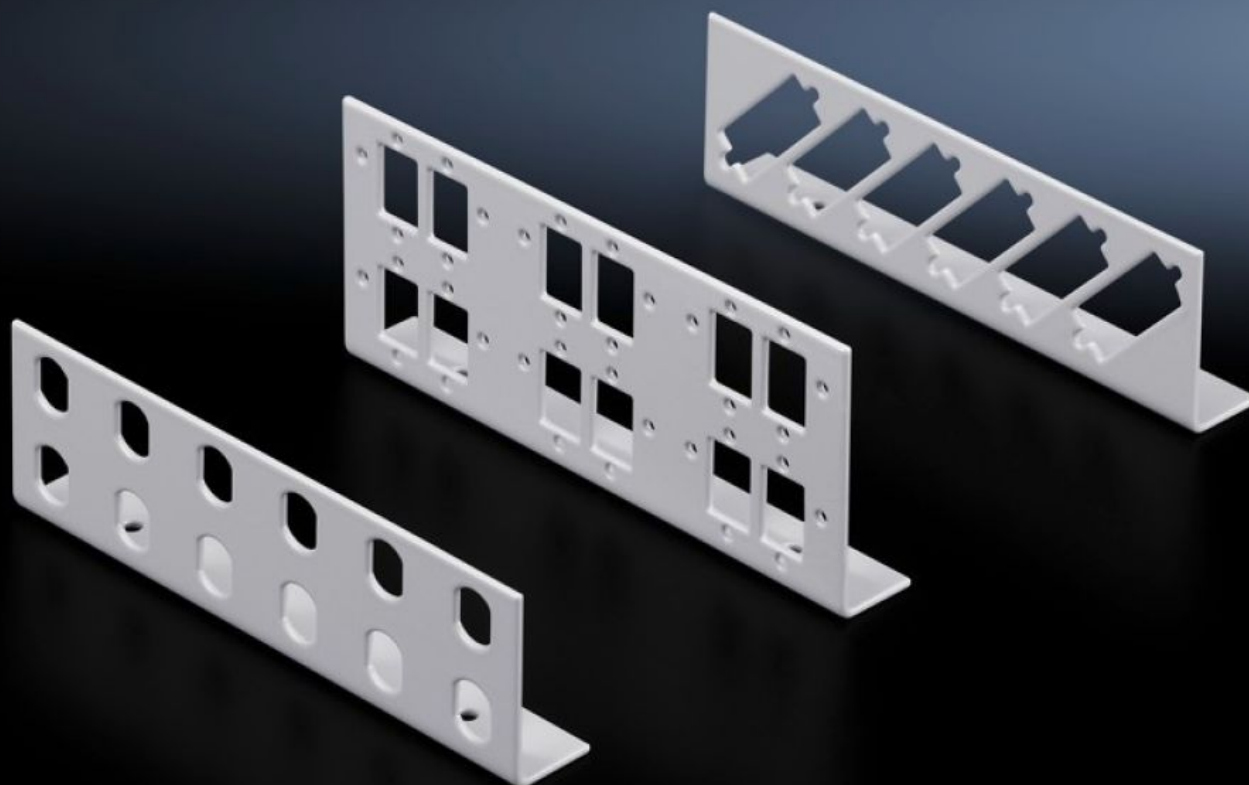


Rittal – The System.

Faster – better – everywhere.



DK 7463.100

Patch panels for small fibre-optic distributors

State: 14.09.2025 (Source: [rittal.com/bg-bg](https://www.rittal.com/bg-bg))

ENCLOSURES

POWER DISTRIBUTION

CLIMATE CONTROL

IT INFRASTRUCTURE

SOFTWARE & SERVICES

FRIEDHELM LOH GROUP



DK 7463.100 - Patch panels for small fibre-optic distributors

Patch panel for small fibre optic distributors for ST, SC, E-2000 and E-2000 duplex couplings.

Features

Model No.	DK 7463.100
Design	E-2000 Duplex = 6 locations
Product description	Various patch panels with different connector types are available for individual configuration of small fibre-optic distributors.
Material	Sheet steel
Colour	RAL 7035
Supply includes	Patch panel Assembly parts
Number of patch panels per enclosure (max.)	2
Basic material	Sheet steel
for fibre-optic coupling	SC E-2000 E-2000 duplex
Number of locations	Single: Duplex: 12 6
Packs of	2 pc(s).
Net weight	0.16
Gross weight	0.191
PCF per pack (cradle-to-gate)	0.7 kg CO2 eq (Cat B)
Note on PCF category	Category B: PCF value (cradle-to-gate) based on the product weight, approximately calculated and self-declared
Customs tariff number	94039910
EAN	4028177187153

Features

ETIM 9	EC001130
ECLASS 8.0	19170113

Tender text

SC patch panel for 7451

Material: Sheet steel, spray finished in RAL 7035