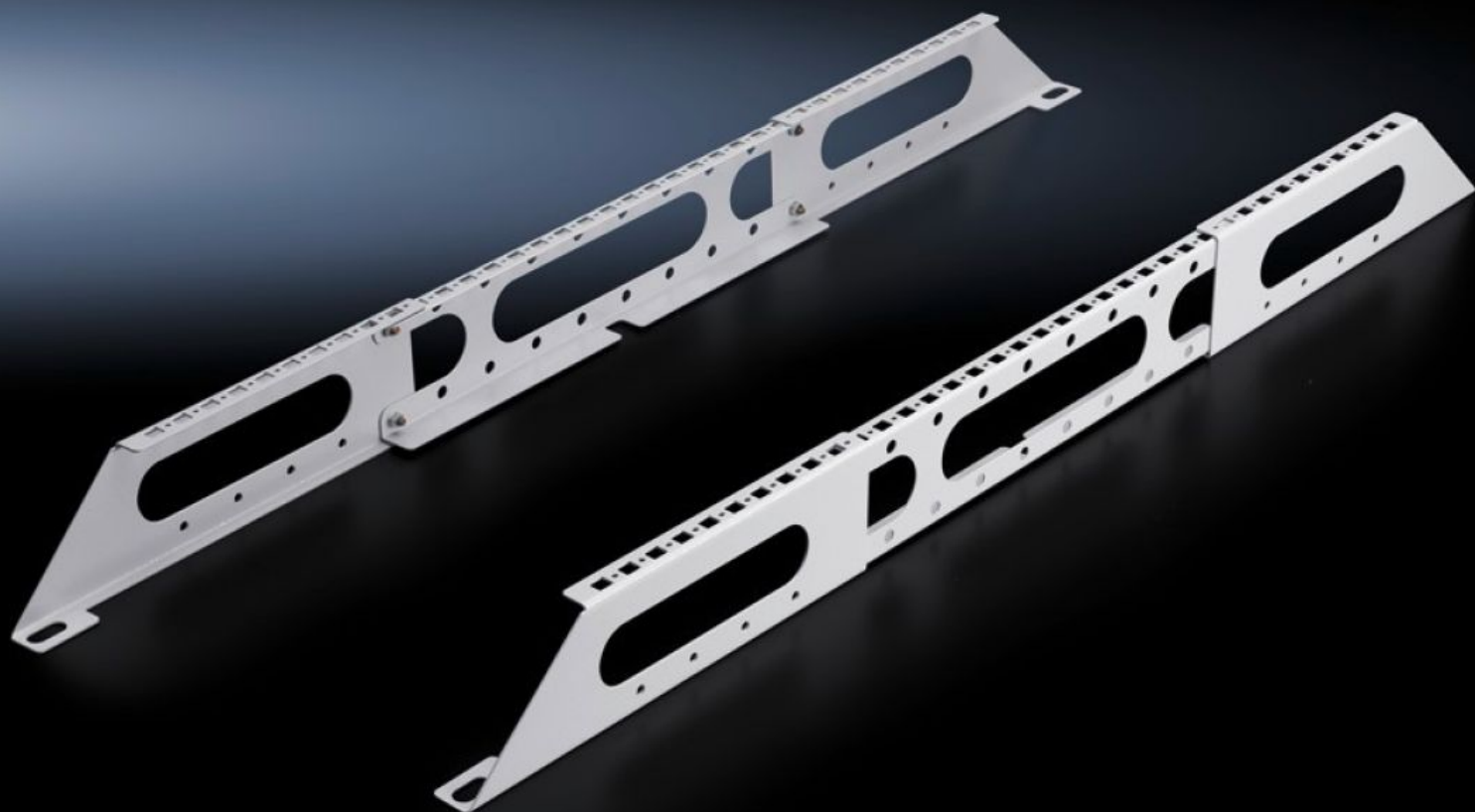


Rittal – The System.

Faster – better – everywhere.



DK 7831.472

System supports for cable routes

State: 25.08.2025 (Source: [rittal.com/bg-bg](https://www.rittal.com/bg-bg))

ENCLOSURES

POWER DISTRIBUTION

CLIMATE CONTROL

IT INFRASTRUCTURE

SOFTWARE & SERVICES

FRIEDHELM LOH GROUP



DK 7831.472 - System supports for cable routes for VX, VX IT

Depth-variable support system facilitates the attachment of most common cable route systems, attachment to all 800 – 1200 mm deep network racks with external screw-fastening of the roof plate.



Features

Model No.	DK 7831.472
Design	Support height 102 mm
Product description	The depth-variable support system may be attached to all 800 – 1200 mm deep network racks with external screw-fastening of the roof plate. The integral system punchings, for screws or captive nuts, support the attachment of most common cable route systems.
Material	Sheet steel
Surface finish	Powder-coated
Colour	RAL 7035
Load capacity (static)	2500 N
Note	Supports combination with fan mounting plate for VX IT In combination with punched rail, suitable for accommodating additional cable routing rails or pipelines.
Basic material	Sheet steel
Packs of	2 pc(s).
Net weight	3.29

Features

Gross weight	3.49
PCF per pack (cradle-to-gate)	13.3 kg CO2 eq (Cat B)
Note on PCF category	Category B: PCF value (cradle-to-gate) based on the product weight, approximately calculated and self-declared
Customs tariff number	73269098
EAN	4028177517301
ETIM 9	EC000322
ECLASS 8.0	27400604