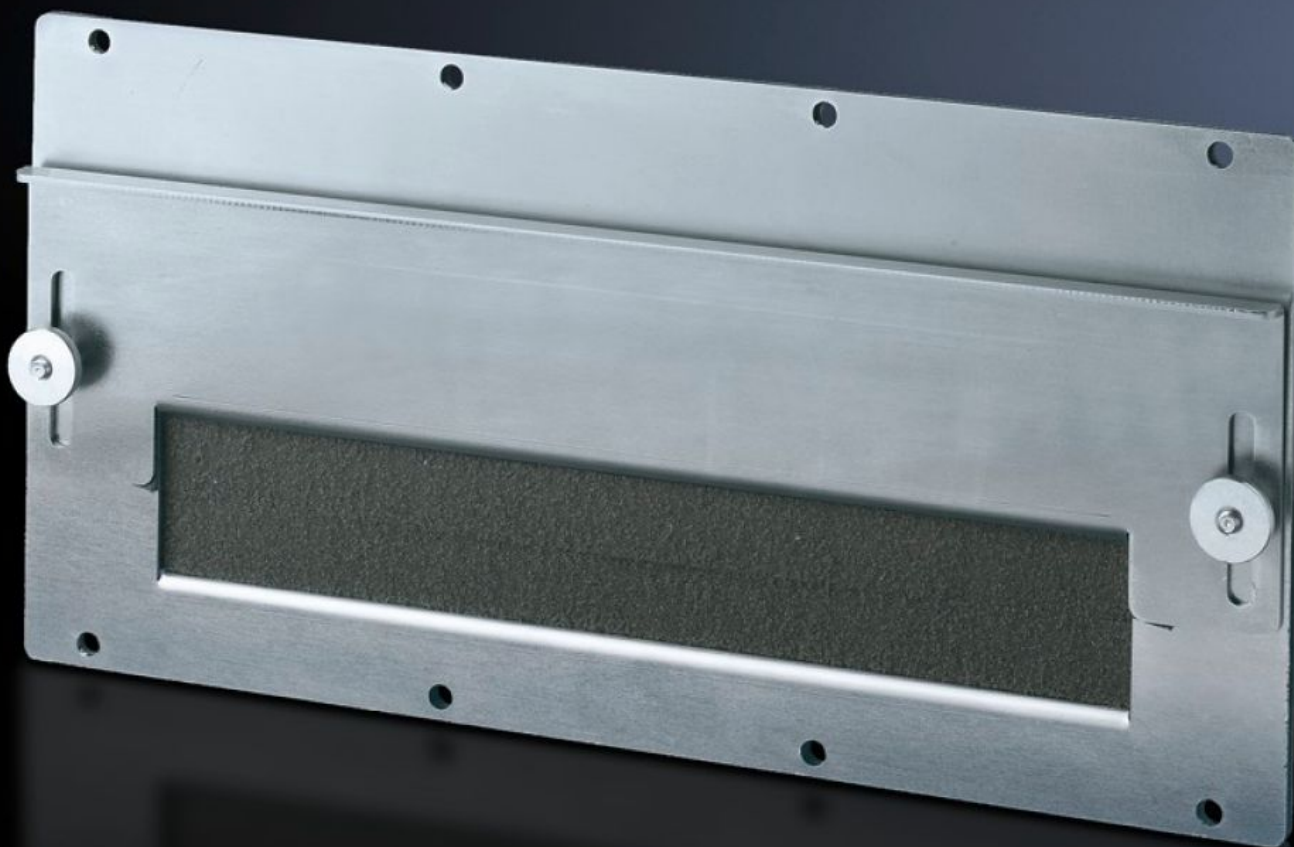


# Rittal – The System.

Faster – better – everywhere.



## SZ 8609.170 Module plates

State: 11.07.2025 (Source: [rittal.com/bg-bg](http://rittal.com/bg-bg))

ENCLOSURES

POWER DISTRIBUTION

CLIMATE CONTROL

IT INFRASTRUCTURE

SOFTWARE & SERVICES

FRIEDHELM LOH GROUP



# SZ 8609.170 - Module plates for cable entry

For pre-assembled cable entry. Sealed, secure routing is achieved via adjustable angle brackets with inserted foam cable clamp strip. Fixed bracket, punched, for cable clamping.

## Features

Model No.	SZ 8609.170
Design	for cable entry
Product description	For the entry of pre-assembled cables. Sealed, secure routing is achieved via adjustable angle brackets with inserted foam cable clamp strip. Fixed bracket, punched, for cable clamping.
Material	Sheet steel, 2 mm
Surface finish	Zinc-plated
Supply includes	Seal and assembly parts
Packs of	1 pc(s).
Net weight	1.4
Gross weight	1.491
PCF per pack (cradle-to-gate)	5.7 kg CO2 eq (Cat B)
Note on PCF category	Category B: PCF value (cradle-to-gate) based on the product weight, approximately calculated and self-declared
Customs tariff number	94039910
EAN	4028177211797
ETIM 9	EC000211
ECLASS 8.0	27142421