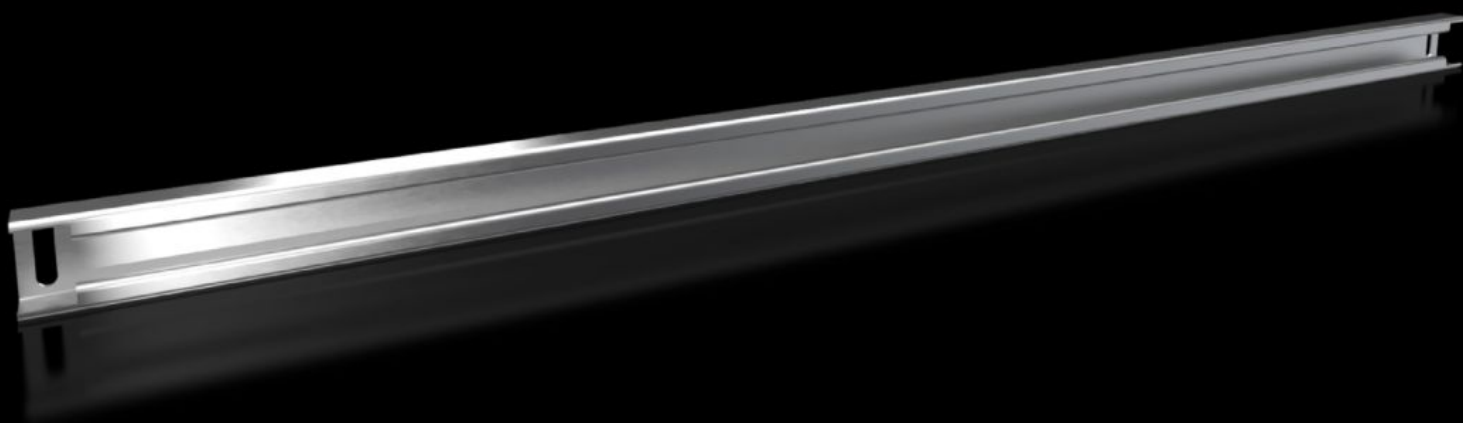


Rittal – The System.

Faster – better – everywhere.



VX 8617.830

Support rail 48 x 26 mm

State: 17.08.2025 (Source: [rittal.com/bg-bg](https://www.rittal.com/bg-bg))

ENCLOSURES

POWER DISTRIBUTION

CLIMATE CONTROL

IT INFRASTRUCTURE

SOFTWARE & SERVICES

FRIEDHELM LOH GROUP



VX 8617.830 - Support rail 48 x 26 mm for VX, VX SE, PC, IW, AX

For heavy installed equipment such as transformers. T-head screw and slots in the support rail accommodate all mounting dimensions.



Features

Model No.	VX 8617.830
Product description	
Material	Sheet steel
Surface finish	Zinc-plated
Supply includes	Assembly parts
VX installation options	In enclosure width 1200 mm, on the inner mounting level and in the base
VX SE installation options	In enclosure width 1200 mm, on the inner mounting level, in conjunction with adaptor rail for VX compatibility and in the base
AX installation options	In enclosure width 1200 mm, in conjunction with rail for interior installation AX and base configuration rail for AX
PC installation options	In enclosure width 1200 mm, on the inner mounting level, in conjunction with adaptor rail for VX compatibility and in the base
WI installation options	In enclosure width 1200 mm, on the inner mounting level, in conjunction with adaptor rail for VX compatibility and in the base

Features

To fit	Enclosure type: VX VX SE PC IW AX CX one-piece console CX pedestal Width: = 1,200 mm
Packs of	2 pc(s).
Net weight	5.6
Gross weight	5.95
Customs tariff number	73269098
EAN	4028177919549
ETIM 9	EC001285
ECLASS 8.0	27189261