

Rittal – The System.

Faster – better – everywhere.



VX 8618.300 Lock insert

State: 23.05.2026 (Source: rittal.com/bg-bg)

ENCLOSURES

POWER DISTRIBUTION

CLIMATE CONTROL

IT INFRASTRUCTURE

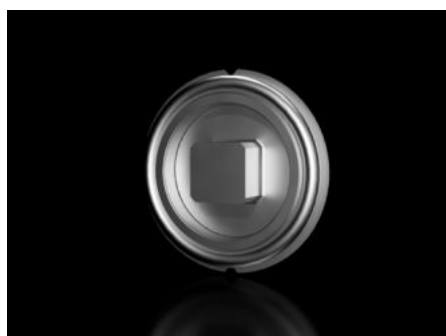
SOFTWARE & SERVICES

FRIEDHELM LOH GROUP



VX 8618.300 - Lock insert type G

For handles and enclosures.



Features

| | |
|-------------------------------|--|
| Model No. | VX 8618.300 |
| Design | G |
| Material | Die-cast zinc |
| Installation in handle system | Comfort handle VX for padlock and lock inserts |
| Lock | Lock insert: 7 mm square |
| To fit enclosure type | VX VX IT |
| Packs of | 1 pc(s). |
| Net weight | 0,015 kg |
| Gross weight | 0,016 kg |
| Customs tariff number | 83016000 |
| ETIM 9 | EC000743 |
| ECLASS 8.0 | 27409218 |
| Product description | VX Lock insert, type G, die-cast zinc, 7 mm square |