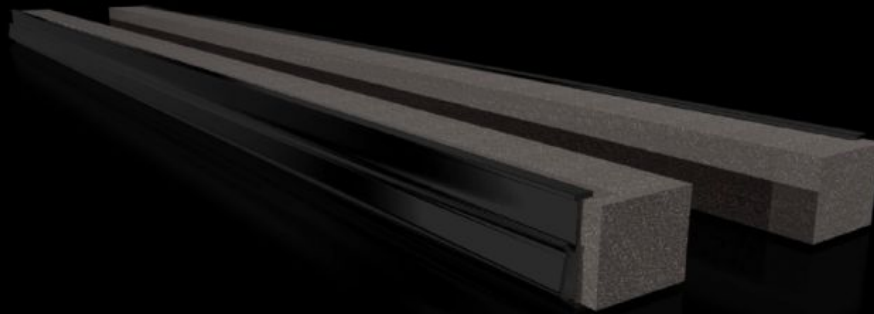


Rittal – The System.

Faster – better – everywhere.



VX 8618.801

Section for cable entry, centre

State: 27.06.2026 (Source: rittal.com/bg-bg)

ENCLOSURES

POWER DISTRIBUTION

CLIMATE CONTROL

IT INFRASTRUCTURE

SOFTWARE & SERVICES

FRIEDHELM LOH GROUP



VX 8618.801 - Section for cable entry, centre

The section is fitted directly onto the gland plates. In this way, when installing the mounting plate in the forward mounting position, the cables may be routed directly onto a cable clamp rail without large bending radii. In conjunction with the cable clamp rail, this enables optimum adjustment between the cable entry and mounting plate.

Features

Model No.	VX 8618.801
Benefits	Simple assembly Full-surface support High level of sealing of cables inserted into the enclosure
Applications	For top-mounting on gland plates.
Material	Hard PVC Flame-resistant, self-extinguishing Temperature resistant to +60 °C Seal: PU foam Cross-section: 30 x 25 mm
Supply includes	Plug-in sections, incl. foam rubber clamp strip
Note	You will need two pieces per cable entry point. From an enclosure width of 1000 mm, the base assembly is divided into two sections in the width. Two cable entry points (left/right) may be used.
To fit	Enclosure type: VX: = 800 mm Enclosure type: VX SE Enclosure type: CX pedestal Enclosure type: CX one-piece console
Packs of	2 pc(s).
Net weight	0,22 kg
Gross weight	0,24 kg
Customs tariff number	39269097
ETIM 9	EC000211

Features

ECLASS 8.0

27142421

Product description

VX Section for cable entry, centre, for W: 800 mm