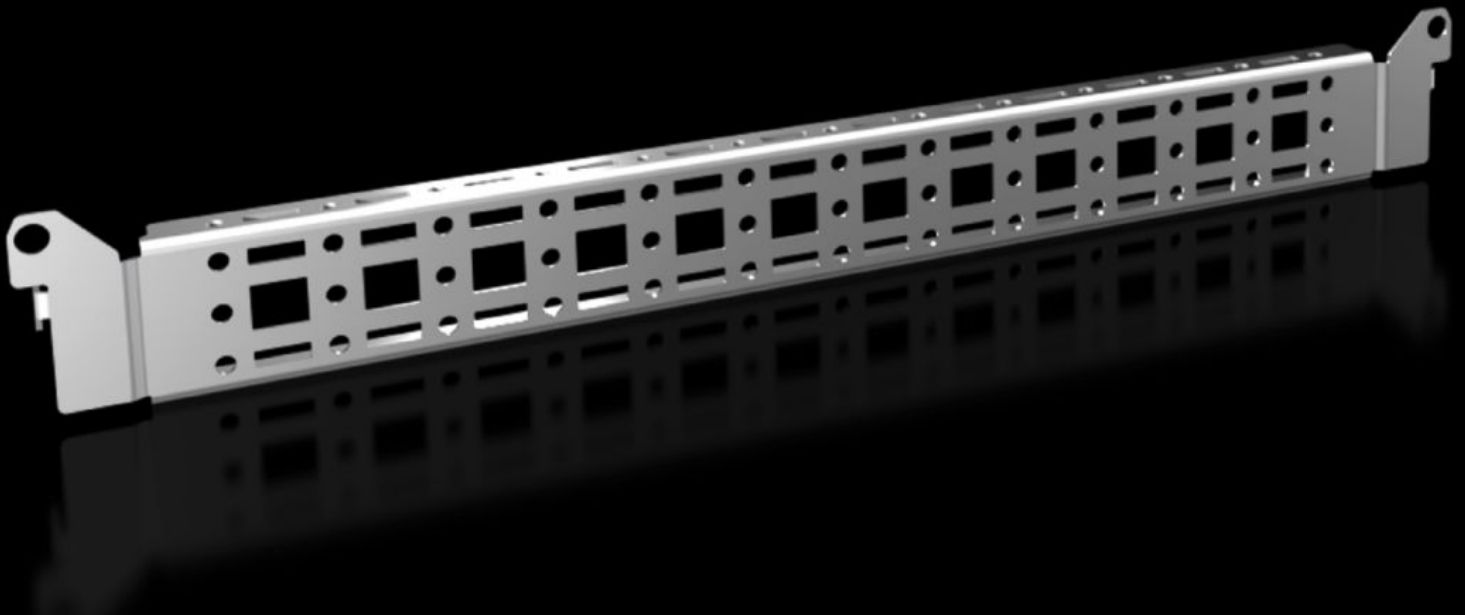
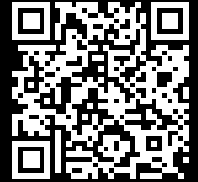


Rittal – The System.

Faster – better – everywhere.



VX 8619.710

**Punched section with mounting
flange, 14 x 39 mm**

State: 07.05.2026 (Source: rittal.com/bg-bg)

ENCLOSURES

POWER DISTRIBUTION

CLIMATE CONTROL

IT INFRASTRUCTURE

SOFTWARE & SERVICES

FRIEDHELM LOH GROUP



VX 8619.710 - Punched section with mounting flange, 14 x 39 mm for VX, VX SE, PC, IW, AX

For securing cable ducts, cable conduit holders, equipment installed on the door, etc.



Features

Model No.	VX 8619.710
Product description	For attaching cable ducts, cable conduit holders, equipment installed on the door, etc.
Material	Sheet steel
Surface finish	Zinc-plated
Supply includes	Assembly parts
Distance between fixing points	375 mm
To fit door width	500 mm
VX installation options	In door width 500 mm
VX SE installation options	In door width 500 mm
AX installation options	In enclosure width 400 mm and in enclosure height 500 mm, in conjunction with rail for interior installation AX In enclosure width 1000 mm, in lockable door
AX stainless steel installation options	In enclosure height 500 mm In enclosure width 400 mm
Installation options, AX plastic	In door width 500 mm

Features

Installation options for 3-part AX	In enclosure depth 573 mm
CX installation options	In console and desk unit in the depth, in conjunction with the CX rail for interior installation In the pedestal, in the enclosure depth, 500 mm In door width 500 mm
TP installation options	In consoles for 3-part assembly in enclosure width 600 mm, in conjunction with rail for interior installation TP, compact enclosure HD
Assembly instruction	For installation in AX sheet steel, only in conjunction with rail for interior installation AX
Note	For installing your own components on the punched section with mounting flange, metal screws or self-tapping M5 screws are required
To fit	Enclosure type: VX VX SE TP AX AX plastic AX wall-mounted enclosure, 3-part CX one-piece console CX console system Suitable for width or height or depth: 500 mm
Packs of	4 pc(s).
Net weight	0,8 kg
Gross weight	0,92 kg
Customs tariff number	73269098
ETIM 9	EC002620
ECLASS 8.0	27189234
Product description	VX Punched section, with mounting flange 14 x 39 mm, for door width: 500 mm

Approvals

Explanations

PCF-declaration