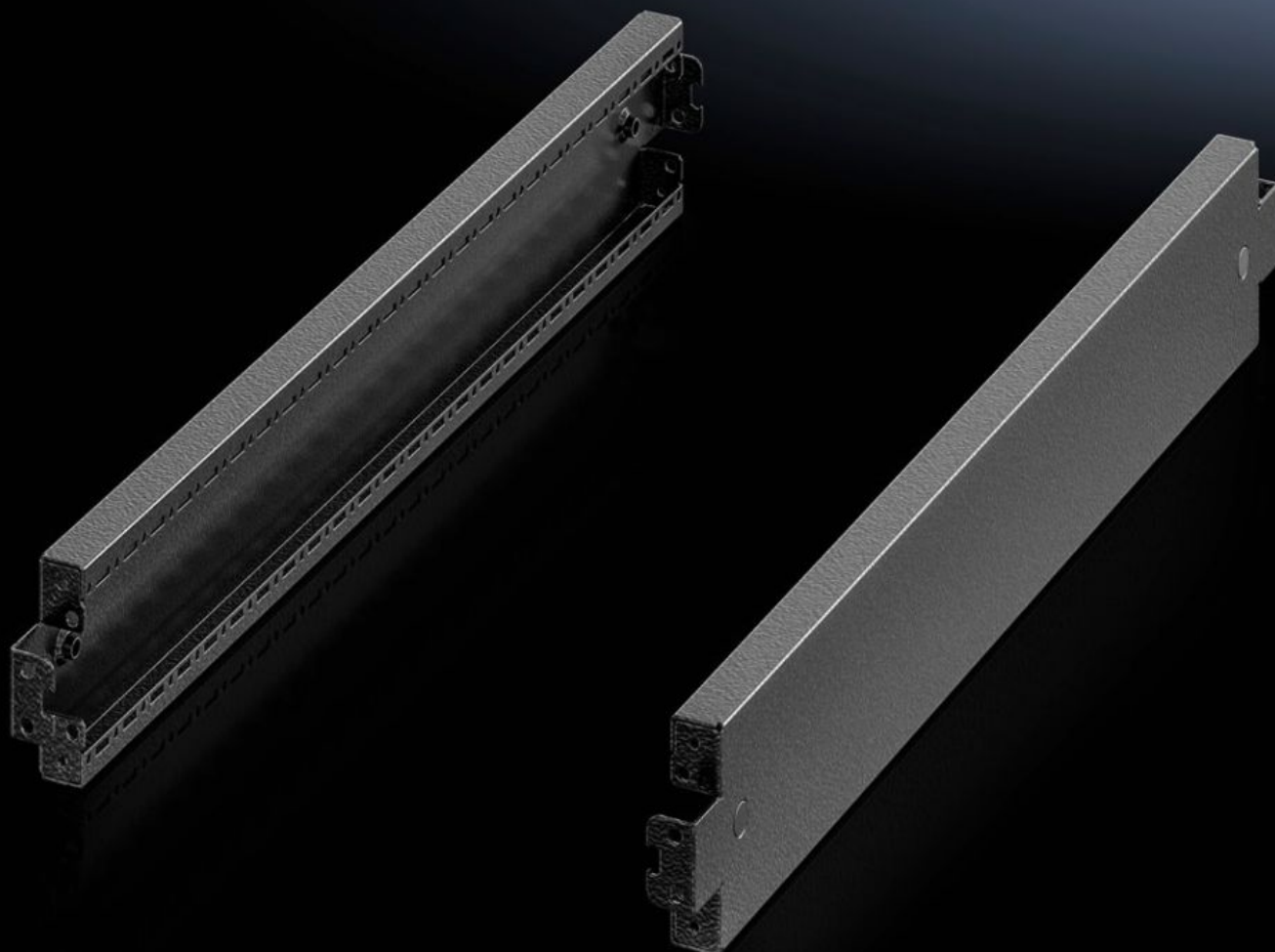


# Rittal – The System.

Faster – better – everywhere.



## VX 8640.032

## Base/plinth trim panels, side, 100 mm

State: 31.01.2026 (Source: [rittal.com/bg-bg](https://www.rittal.com/bg-bg))

ENCLOSURES

POWER DISTRIBUTION

CLIMATE CONTROL

IT INFRASTRUCTURE

SOFTWARE & SERVICES

FRIEDHELM LOH GROUP



# VX 8640.032 - Base/plinth trim panels, side, 100 mm for base/plinth system VX, sheet steel

To finish off a base/plinth unit at the sides and for additional stability, or for the interior installation of bayed base/plinths. One 200 mm high or two 100 mm high trim panels may optionally be fitted on 200 mm high base/plinths.

## Features

Model No.	VX 8640.032
Product description	To finish off a base/plinth unit at the sides and for additional stability, or for the interior installation of bayed base/plinths. One 200 mm high or two 100 mm high trim panels may optionally be fitted on 200 mm high base/plinths.
Material	Sheet steel
Colour	RAL 9005
Supply includes	Assembly parts
Dimensions	Height: 100 mm
To fit	Depth: = 500 mm
Type rating to UL 50E	Type 1, 12
Weight/pack	1,36 kg
Packs of	2 pc(s).
Net weight	1.16
Gross weight	1.36
Customs tariff number	94039910
EAN	4028177958944
E-Number Sweden	E3465378
ETIM 9	EC000721
ECLASS 8.0	27182003

# Approvals

---

Approvals

UL + C-UL - FTTA