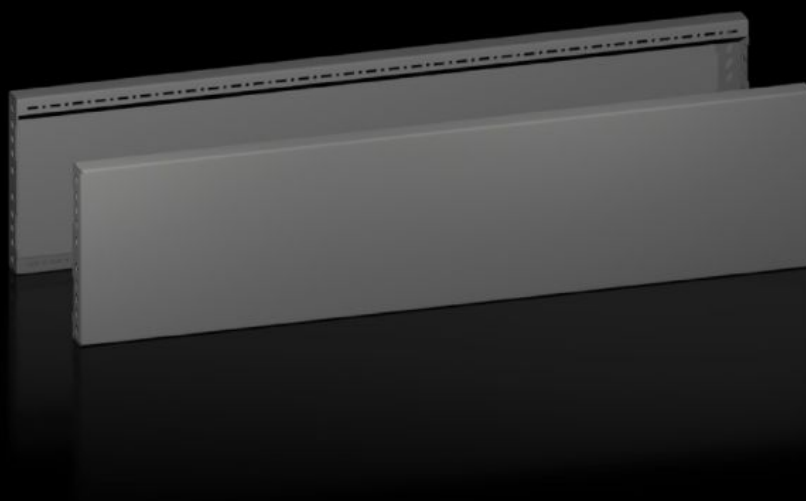


Rittal – The System.

Faster – better – everywhere.



VX 8660.045

Base/plinth trim panels, side

State: 17.08.2025 (Source: [rittal.com/bg-bg](https://www.rittal.com/bg-bg))

ENCLOSURES

POWER DISTRIBUTION

CLIMATE CONTROL

IT INFRASTRUCTURE

SOFTWARE & SERVICES

FRIEDHELM LOH GROUP



VX 8660.045 - Base/plinth trim panels, side for base/plinth system VX, sheet steel

To finish off a base/plinth unit at the sides and for additional stability or interior configuration of bayed base/plinths. One 200 mm high or two 100 mm high trim panels may optionally be fitted on 200 mm high base/plinths.



Features

Model No.	VX 8660.045
Design	Solid
Material	Sheet steel
Colour	RAL 9005
Supply includes	Assembly parts
Dimensions	Height: 200 mm
To fit	Enclosure type: VX VX IT VX SE TX CableNet TS TS IT TP PC IW CX Depth: = 1,000 mm

Features

Type rating to UL 50E	Type 1 Type 12
Weight/pack	5,58 kg
Packs of	2 pc(s).
To fit	for base/plinth system VX, sheet steel
Net weight	5.54
Gross weight	5.912
PCF per pack (cradle-to-gate)	21.3 kg CO2 eq (Cat B)
Note on PCF category	Category B: PCF value (cradle-to-gate) based on the product weight, approximately calculated and self-declared
Customs tariff number	94039910
EAN	4028177978331
ETIM 9	EC000721
ETIM 8	EC000721
ECLASS 8.0	27182003