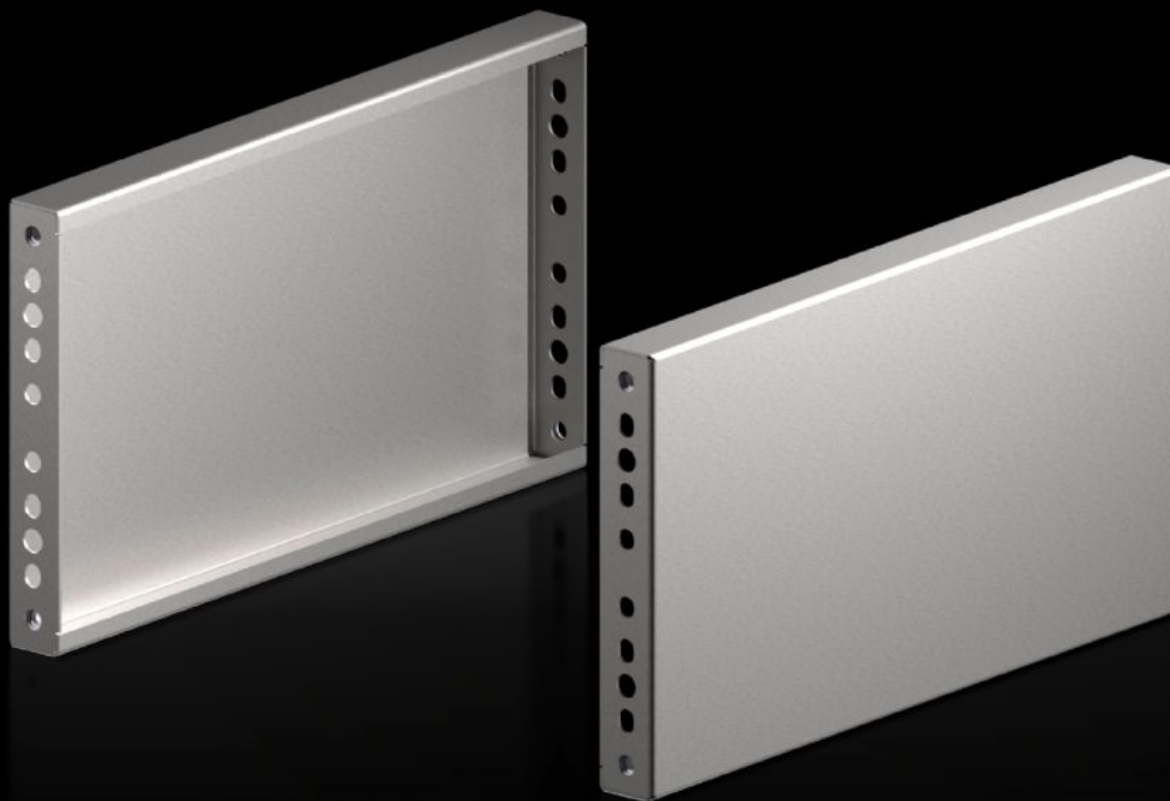
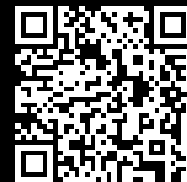


Rittal – The System.

Faster – better – everywhere.



VX 8660.081

Base/plinth trim panels, sides, for VX base/plinth system, stainless steel

State: 10.08.2025 (Source: [rittal.com/bg-bg](https://www.rittal.com/bg-bg))

ENCLOSURES

POWER DISTRIBUTION

CLIMATE CONTROL

IT INFRASTRUCTURE

SOFTWARE & SERVICES

FRIEDHELM LOH GROUP



VX 8660.081 - Base/plinth trim panels, sides, for VX base/plinth system, stainless steel New version

Stainless steel base/plinth trim panels are used in the depth to finish off a base/plinth unit at the sides.



Features

| | |
|-----------------------|---|
| Model No. | VX 8660.081 |
| Material | Stainless steel 1.4301 (AISI 304) |
| Surface finish | Brushed, grain 400 |
| Supply includes | Assembly parts |
| Note | Components from the 1st generation base/plinth system cannot be combined with components from the 2nd generation base/plinth system |
| Dimensions | Height: 200 mm |
| To fit | Enclosure type: VX VX SE TS PC Depth: = 500 mm |
| Type rating to UL 50E | Type 1 Type 3R Type 4 Type 4X Type 12 |
| Packs of | 2 pc(s). |
| Net weight | 2.5 |

Features

| | |
|-----------------------|---------------|
| Gross weight | 2.742 |
| Customs tariff number | 94039910 |
| EAN | 4028177037748 |
| ETIM 9 | EC000721 |
| ETIM 8 | EC000721 |
| ECLASS 8.0 | 27182003 |

Approvals

| | |
|-----------|------------------|
| Approvals | UL + C-UL - FTTA |
|-----------|------------------|