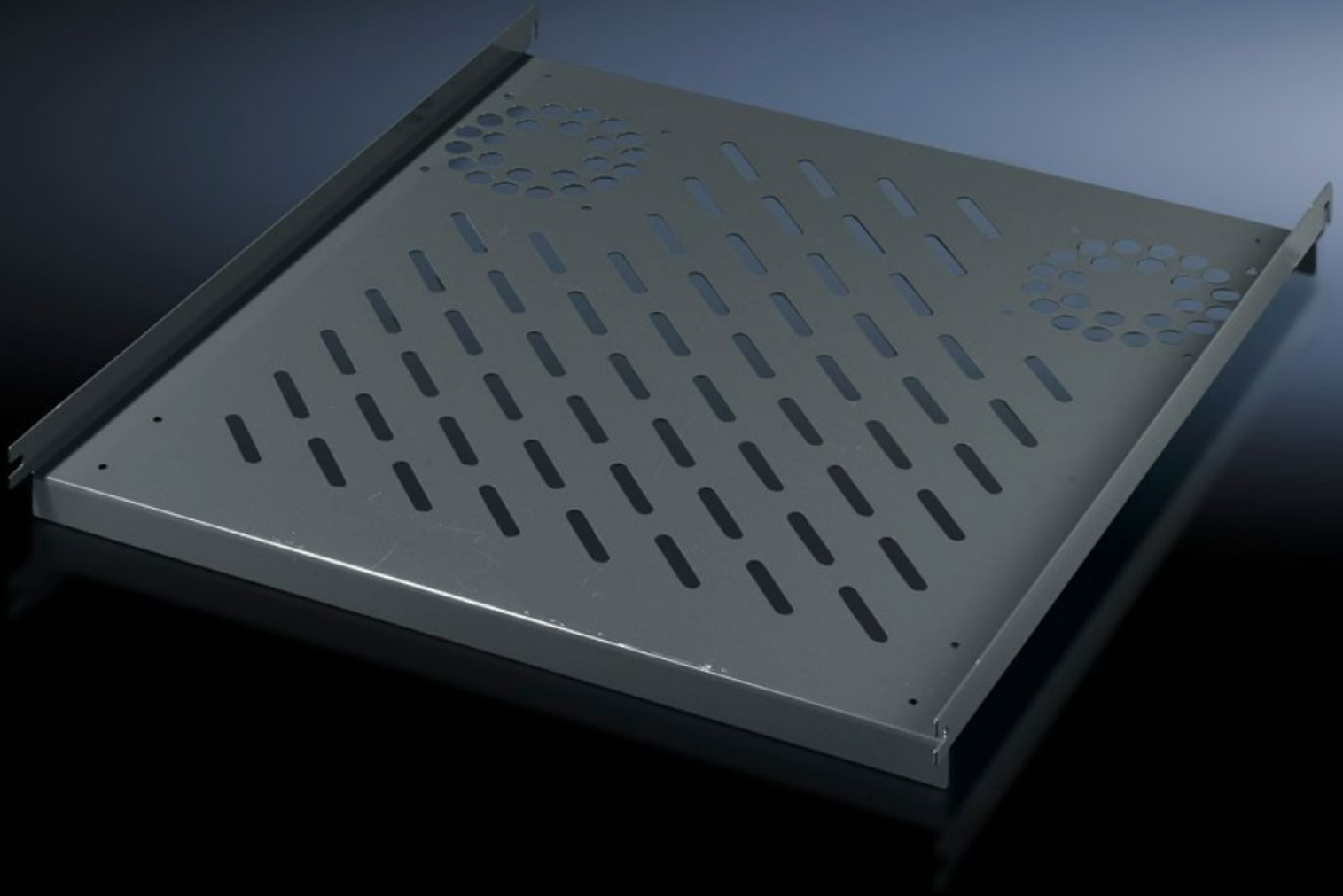


**Rittal – The System.**

Faster – better – everywhere.



**PC 8800.900**

**Component shelf, static installation**

State: 09.10.2025 (Source: [rittal.com/bg-bg](http://rittal.com/bg-bg))

ENCLOSURES

POWER DISTRIBUTION

CLIMATE CONTROL

IT INFRASTRUCTURE

SOFTWARE & SERVICES

FRIEDHELM LOH GROUP



# PC 8800.900 - Component shelf, static installation for TS, VX SE, PC, IW, prepared for fan expansion kit

For direct mounting on the vertical enclosure section. Simply locate into 4 pre-fitted screws and secure.

## Features

Model No.	PC 8800.900
Product description	Simply locate into 4 pre-fitted screws and secure.
Material	Sheet steel
Colour	RAL 7015
Supply includes	Assembly parts
Installation options	On the vertical TS, VX SE enclosure section
Load capacity	40 kg surface load, static
Note	For enclosures without mounting plate
Support area	Width: 507 mm Depth: 550 mm
To fit	Enclosure type: TS VX SE PC IW Width: = 600 mm Depth: = 600 mm
Packs of	1 pc(s).
Net weight	3.396
Gross weight	3.52
PCF per pack (cradle-to-gate)	17.5 kg CO2 eq (Cat B)
Note on PCF category	Category B: PCF value (cradle-to-gate) based on the product weight, approximately calculated and self-declared
Customs tariff number	94039910

# Features

---

EAN	4028177263086
ETIM 9	EC002620
ECLASS 8.0	27189261

---