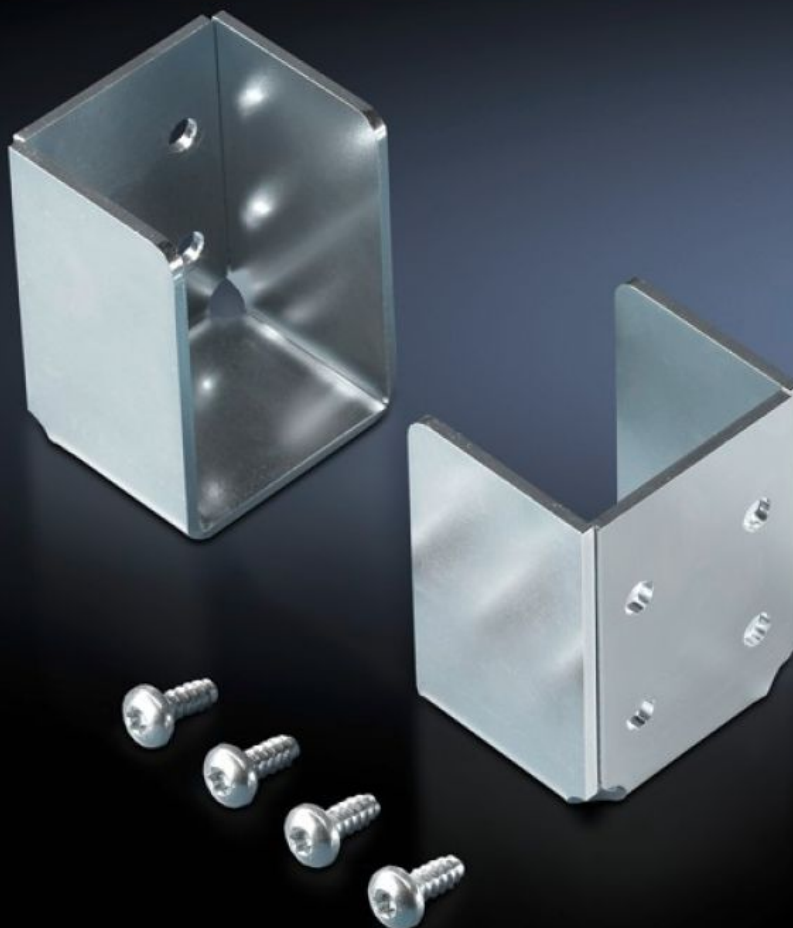


# Rittal – The System.

Faster – better – everywhere.



## TS 8801.000 Holder

State: 15.12.2025 (Source: [rittal.com/bg-bg](https://www.rittal.com/bg-bg))

ENCLOSURES

POWER DISTRIBUTION

CLIMATE CONTROL

IT INFRASTRUCTURE

SOFTWARE & SERVICES

FRIEDHELM LOH GROUP



# TS 8801.000 - Holder for protective bars

For mounting on the vertical section. The protective bar is simply inserted.

## Features

Model No.	TS 8801.000
Product description	For mounting on the vertical section. The protective bar is simply inserted.
Material	Sheet steel
Surface finish	Zinc-plated
Supply includes	Assembly parts
Packs of	2 pc(s).
Net weight	0.35
Gross weight	0.368
PCF per pack (cradle-to-gate)	1.7 kg CO2 eq (Cat B)
Note on PCF category	Category B: PCF value (cradle-to-gate) based on the product weight, approximately calculated and self-declared
Customs tariff number	83024900
EAN	4028177516977
ETIM 9	EC002620
ECLASS 8.0	27189261