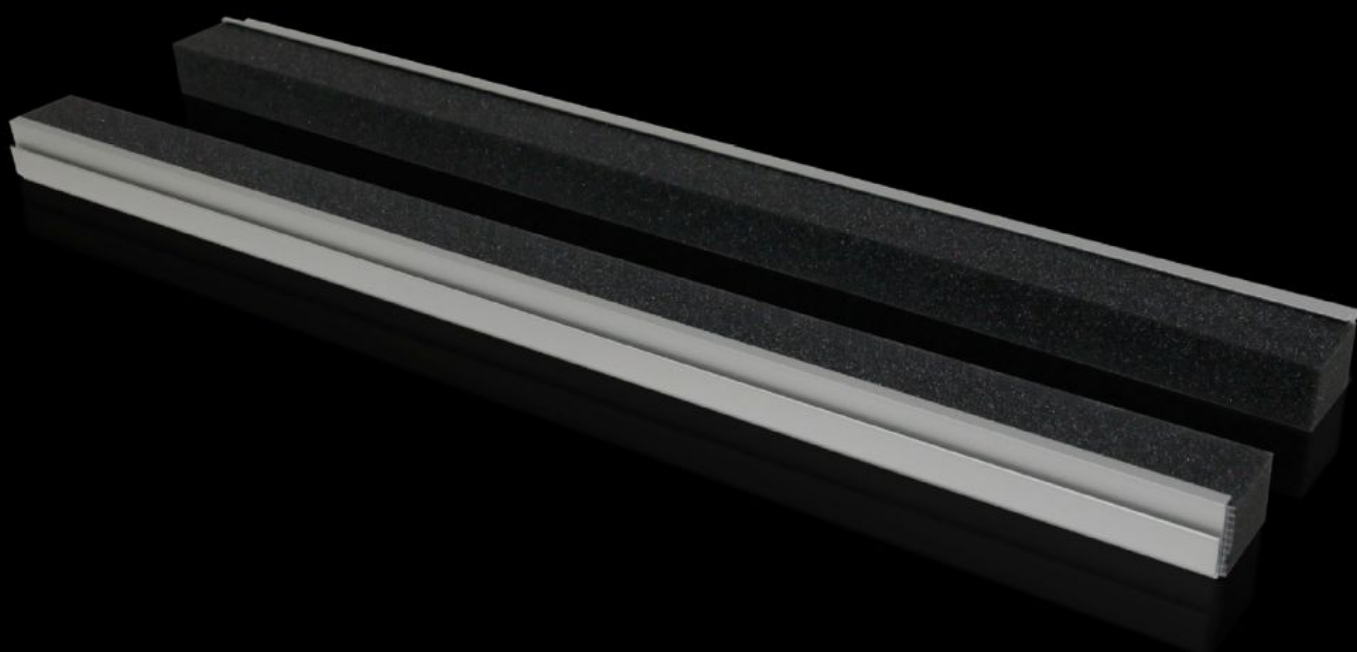
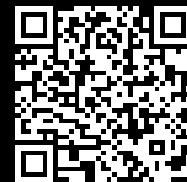


# Rittal – The System.

Faster – better – everywhere.



## TS 8802.125

## Section for cable entry, rear

State: 13.07.2025 (Source: [rittal.com/bg-bg](https://www.rittal.com/bg-bg))

ENCLOSURES

POWER DISTRIBUTION

CLIMATE CONTROL

IT INFRASTRUCTURE

SOFTWARE & SERVICES

FRIEDHELM LOH GROUP



# TS 8802.125 - Section for cable entry, rear for TS, TP

For mounting directly onto the base opening.

## Features

Model No.	TS 8802.125
Product description	For sealing the cable entry at the base opening.
Benefits	Particularly well-suited to cables with identical cross-sections When installing the mounting plate in the rearmost position, the cables may be routed directly with no large radii.
Technical specifications	Foam rubber cable clamp strip: Cross-section: 30 x 25 mm
Applications	Mount directly on the base opening/base tray and gland plate
Material	Extruded aluminium section Foam rubber cable clamp strip: PU foam
Supply includes	Plug-in sections, incl. foam rubber clamp strip
Note	2 pc(s). are sufficient for one base opening up to an enclosure width of 800 mm From an enclosure width of 1000 mm, two base openings are provided. 4 packs per enclosure may be fitted
To fit	Enclosure type: TS: = 1,200 mm Enclosure type: TP
IP protection category to IEC 60529	IP 55 if installed correctly
Packs of	4 pc(s).
Net weight	0.384
Gross weight	0.433
Customs tariff number	76042990
EAN	4028177496385
ETIM 9	EC002624
ECLASS 8.0	27189265