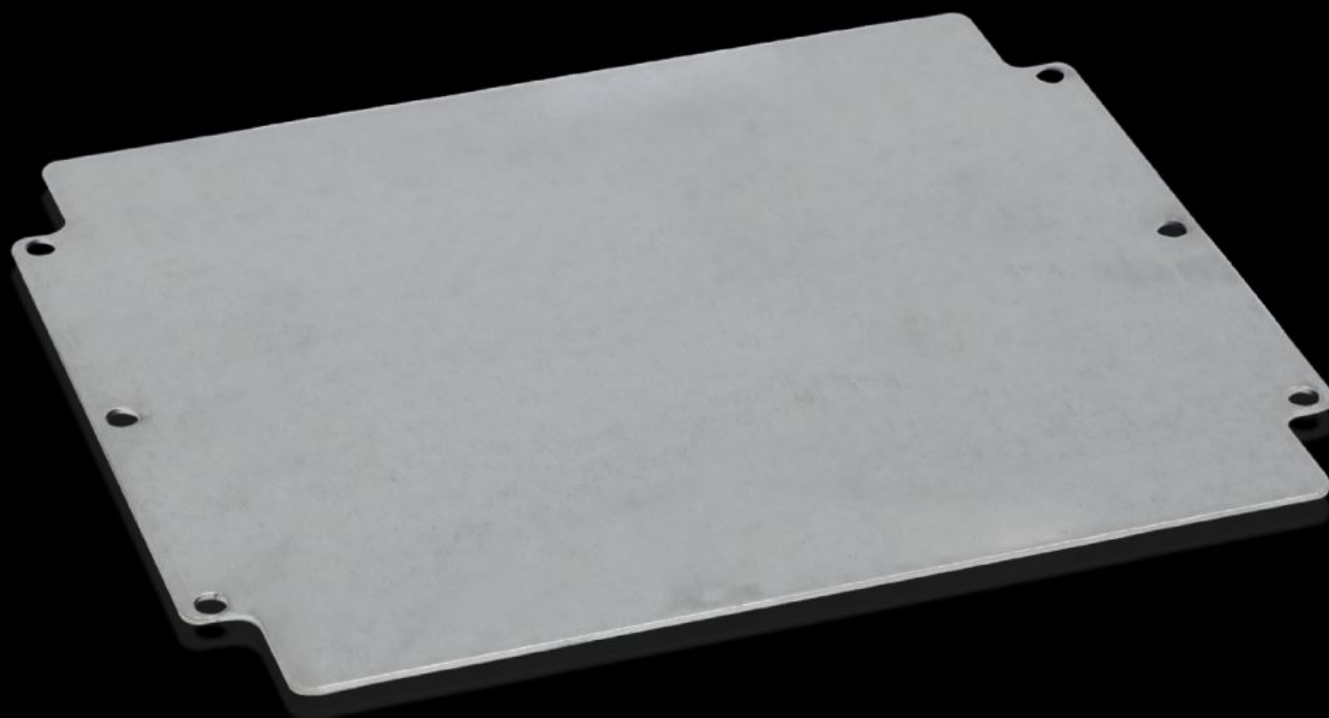


# Rittal – The System.

Faster – better – everywhere.



## GA 9117.700 Mounting plate

State: 06.09.2025 (Source: [rittal.com/bg-bg](https://www.rittal.com/bg-bg))

ENCLOSURES

POWER DISTRIBUTION

CLIMATE CONTROL

IT INFRASTRUCTURE

SOFTWARE & SERVICES

FRIEDHELM LOH GROUP



# GA 9117.700 - Mounting plate for GA

For individual interior installation, with mounting holes.



## Features

Model No.	GA 9117.700
Product description	For universal interior installation, with mounting holes.
Material	Sheet steel
Surface finish	Zinc-plated
Dimensions mounting plate (W x H)	264 mm x 214 mm
To fit	Enclosure type: GA Width: = 280 mm Height: = 232 mm
Packs of	1 pc(s).
Net weight	0.6
Gross weight	0.663
PCF per pack (cradle-to-gate)	3.4 kg CO2 eq (Cat B)
Note on PCF category	Category B: PCF value (cradle-to-gate) based on the product weight, approximately calculated and self-declared
Customs tariff number	94039910
EAN	4028177154377
ETIM 9	EC000213
ECLASS 8.0	27409216