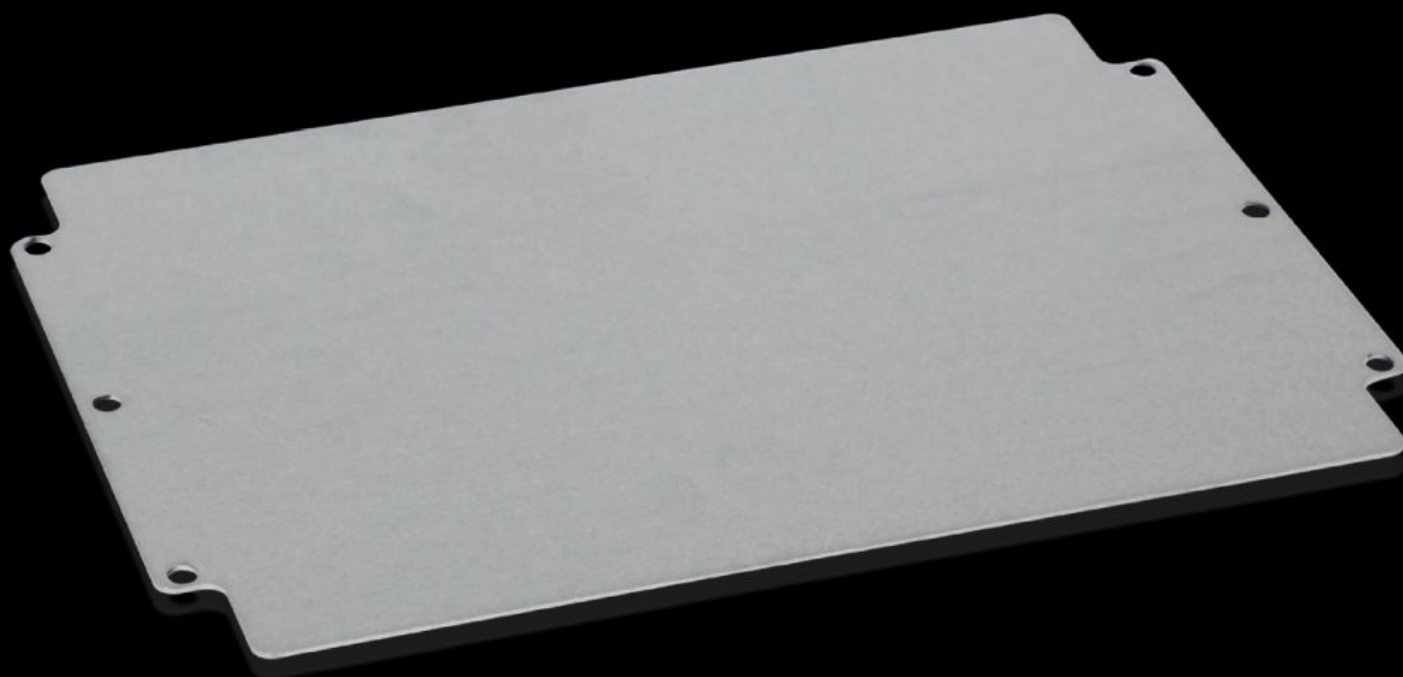


# Rittal – The System.

Faster – better – everywhere.



## GA 9118.700

### Mounting plate

State: 14.12.2025 (Source: [rittal.com/bg-bg](https://www.rittal.com/bg-bg))

ENCLOSURES

POWER DISTRIBUTION

CLIMATE CONTROL

IT INFRASTRUCTURE

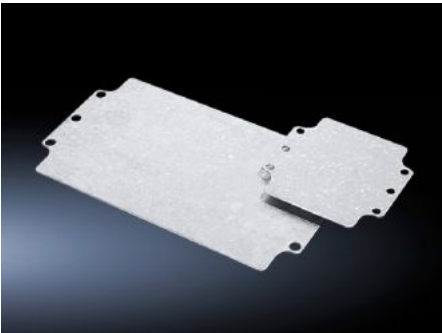
SOFTWARE & SERVICES

FRIEDHELM LOH GROUP



# GA 9118.700 - Mounting plate for GA

For individual interior installation, with mounting holes.



## Features

Model No.	GA 9118.700
Product description	For universal interior installation, with mounting holes.
Material	Sheet steel
Surface finish	Zinc-plated
Dimensions mounting plate (W x H)	314 mm x 214 mm
To fit	Enclosure type: GA GA Width: = 330 mm Height: = 230 mm
Packs of	1 pc(s).
Net weight	0.77
Gross weight	0.78
PCF per pack (cradle-to-gate)	4 kg CO2 eq (Cat B)
Note on PCF category	Category B: PCF value (cradle-to-gate) based on the product weight, approximately calculated and self-declared
Customs tariff number	94039910
EAN	4028177154384
ETIM 9	EC000213

# Features

ECLASS 8.0

27409216