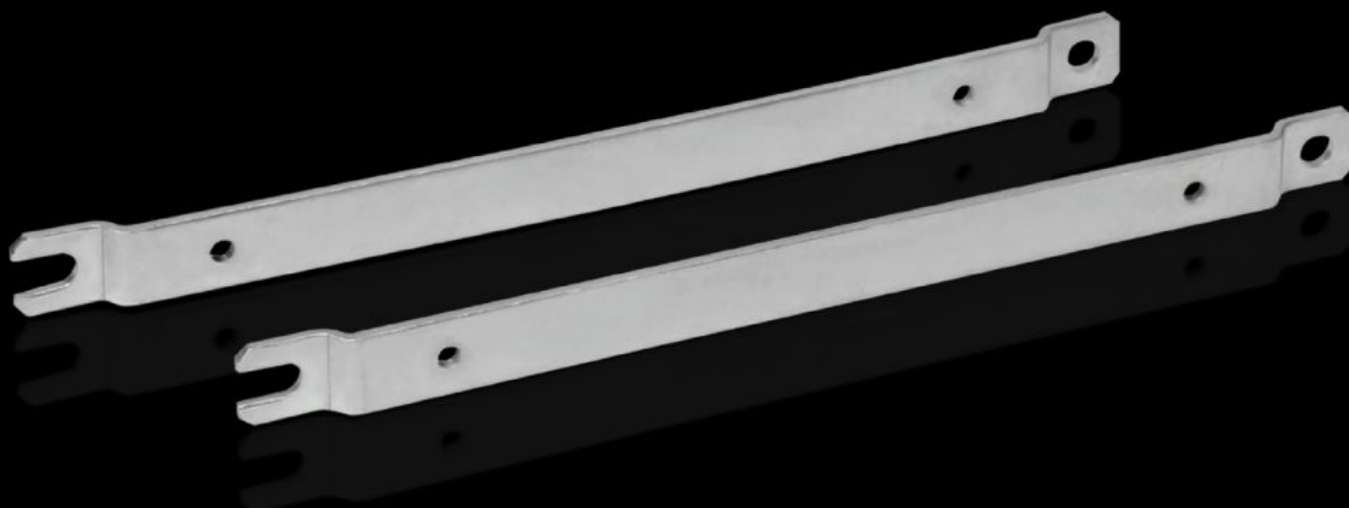


Rittal – The System.

Faster – better – everywhere.



GA 9121.230

Wall mounting bracket

State: 11.09.2025 (Source: [rittal.com/bg-bg](https://www.rittal.com/bg-bg))

ENCLOSURES

POWER DISTRIBUTION

CLIMATE CONTROL

IT INFRASTRUCTURE

SOFTWARE & SERVICES

FRIEDHELM LOH GROUP



GA 9121.230 - Wall mounting bracket for GA

For external mounting on surfaces – no need to dismantle the cover if pre-assembled.



Features

Model No.	GA 9121.230
Product description	For external mounting on surfaces – no need to remove the cover if pre-assembled.
Material	Sheet steel
Surface finish	Zinc-plated
To fit	Enclosure type: GA Height: ≥ 230 mm
Packs of	2 pc(s).
Net weight	0.26
Gross weight	0.287
PCF per pack (cradle-to-gate)	1.1 kg CO ₂ eq (Cat B)
Note on PCF category	Category B: PCF value (cradle-to-gate) based on the product weight, approximately calculated and self-declared
Customs tariff number	83024900
EAN	4028177154520
ETIM 9	EC002625
ECLASS 8.0	27189234