

# Rittal – The System.

Faster – better – everywhere.



## SV 9340.450 OM adaptors

State: 03.07.2026 (Source: [rittal.com/bg-bg](http://rittal.com/bg-bg))

ENCLOSURES

POWER DISTRIBUTION

CLIMATE CONTROL

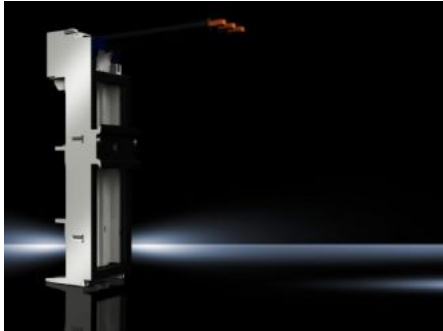
IT INFRASTRUCTURE

SOFTWARE & SERVICES

FRIEDHELM LOH GROUP



# SV 9340.450 - OM adaptors with connection cables



## Features

Model No.	SV 9340.450
Design	With connection cable
Material	Polyamide Fire protection corresponding to UL 94-V0
Colour	Chassis: RAL 7035
Connection cables (AWG)	AWG 6
Rated current max.	65 A
Rated operating voltage	690 V, 3~
Note	The technical data may vary for UL applications
Electrical ratings UL (SCCR)	30 kA - 600 V, Fuse Class K5 max. 60 A, JDDZ/7 30 kA - 480 V, Combination Motor Controller max. 63 A, NKJH/7 65 kA - 600 V, Fuse Class J max. 60 A, JDDZ/7 65 kA - 480 V, Manual Motor Controller max. 63 A, NLRV/7 65 kA - 480 V, Combination Motor Controller max. 63 A, NKJH/7
For bar systems with centre-to-centre spacing	60 mm
Length of connection cable	130 mm
Support rail type	Support frame, 1 x TS 55E, 1 x TS 55D-V
Number of poles	3-pole
Support frame support	Yes

# Features

---

Dimensions	Width: 55 mm Height: 272 mm
Support rails Qty/height	2 / 10 mm
To fit busbars	Height: 5, 10 mm
Support frame (W x H)	55 mm x 237 mm
Approvals	UL
Packs of	1 pc(s).
Net weight	0,399 kg
Gross weight	0,405 kg
Copper weight (kg per piece)	0,116
Customs tariff number	85369095
ETIM 9	EC001531
ECLASS 8.0	27370304
Product description	SV OM adaptor, 65 A, 690 V, 3-pole, connection cable AWG 6, WH: 55x272 mm, support frame, support rail TS 55E, TS 55D-V

---

# Approvals

---

Approvals	ABS DNV Lloyds Register UL + C-UL (listed)
Explanations	Declaration of conformity Declaration of conformity UK

---

# Tender text

OM adaptor 65 A

OM adaptor 65 A with connection cable, 3-pole,  
for busbar thickness 5/10 mm and PLS 800/1600

Technical specifications

Connection cable: AWG 6 / approx. 16 qmm

Support frame: 55 x 170 mm

Support frame support: -

Insert strips: -

Support rail: 1 with anti-slip guard

System:

Rittal RiLine60