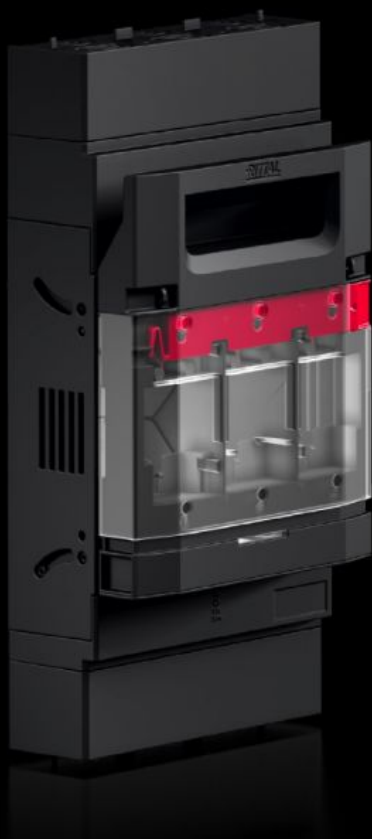
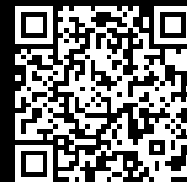


Rittal – The System.

Faster – better – everywhere.



RX 9363.215

RiLineX Fuse-switch disconnecter

State: 19.07.2025 (Source: [rittal.com/bg-bg](https://www.rittal.com/bg-bg))

ENCLOSURES

POWER DISTRIBUTION

CLIMATE CONTROL

IT INFRASTRUCTURE

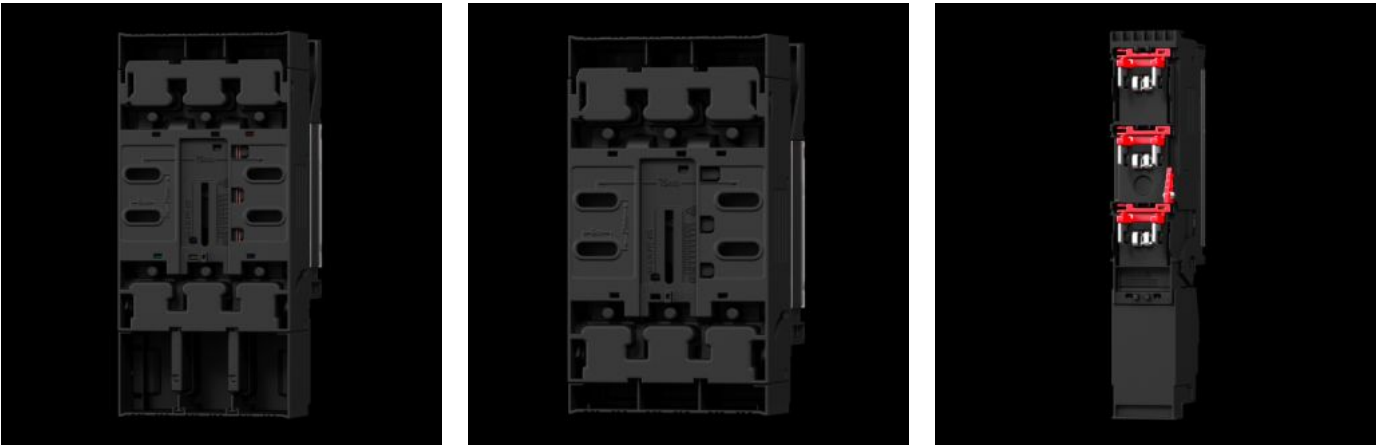
SOFTWARE & SERVICES

FRIEDHELM LOH GROUP



RX 9363.215 - RiLineX Fuse-switch disconnecter

RiLineX NH fuse-switch disconnecter in size 2 for mounting plates. The cover can be locked and prepared for a lead seal. It also has visual fuse monitoring. Integrated measuring points on the cover ensure safe voltage testing. NH fuse-switch disconnecters have a park position to make maintenance easier. Size M10 screw terminal connection. Includes electronic fuse monitoring.



Features

Model No.	RX 9363.215
Design	For mounting plate assembly
Benefits	Cover: can be locked and prepared for a lead seal Voltage test through separate opening Tool-free changeover of the cable outlet Park position for simpler maintenance work High rated voltage 800 V ready All variants also available with electronic fuse monitoring
Material	Polyamide (PA 6) Fire protection corresponding to UL 94 Contact tracks: Electrolytic copper, silver-plated
Colour	RAL 9005 RAL 35745
Supply includes	Connectors for electronic fuse monitoring
for mounting plate assembly	Yes
Cable outlet	Top/bottom

Features

Type of electrical connection	Screw M10
Rated insulation voltage	1000 kV
Rated operating current max.	400 A
Rated operating voltage	690 V AC
For NH size	2
Test specification	IEC/DIN EN 60 947-3 DIN EN 60 269-2 (fuse inserts)
Dimensions	Width: 209 mm Height: 349 mm Depth: 129 mm
Operating temperature range	-5 °C...35 °C
Storage temperature range	-25 °C...70 °C
Number of poles	3-pole
Contamination level	3
with electronic fuse monitoring	Yes
IP protection category to IEC 60 529	IP 2XB
Power dissipation (max.)	71 W
Packs of	1 pc(s).
Net weight	3.7
Gross weight	3.746
Copper weight (kg per piece)	1.32
Customs tariff number	85369095
ETIM 9	EC001040

Approvals

Explanations	Declaration of conformity
--------------	---------------------------