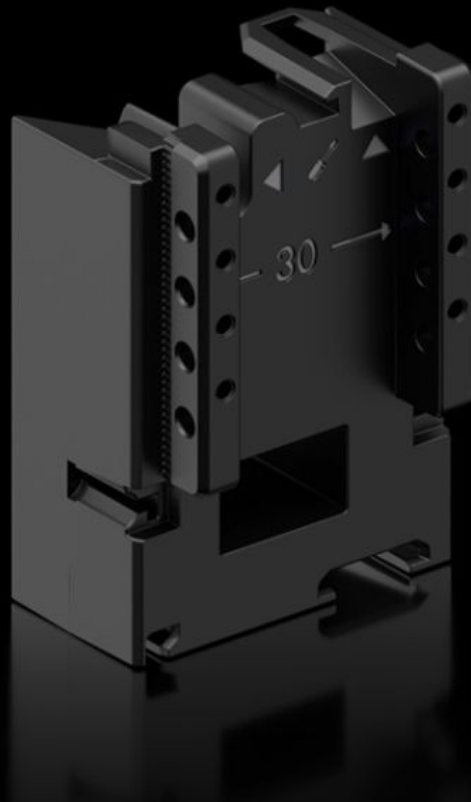


# Rittal – The System.

Faster – better – everywhere.



## RX 9365.750

## RiLineX expansion block

State: 02.04.2026 (Source: [rittal.com/bg-bg](http://rittal.com/bg-bg))

ENCLOSURES

POWER DISTRIBUTION

CLIMATE CONTROL

IT INFRASTRUCTURE

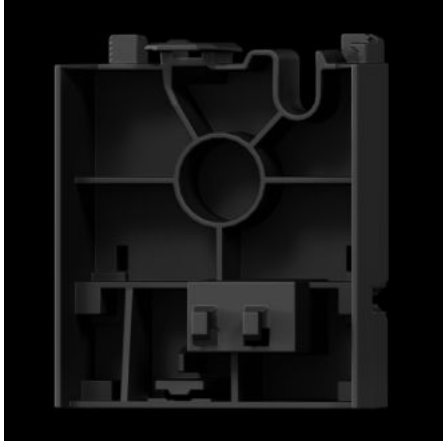
SOFTWARE & SERVICES

FRIEDHELM LOH GROUP



# RX 9365.750 - RiLineX expansion block for component adaptors and component supports

RiLineX extension block, width 45 mm, to extend the component adaptor by 60 mm for busbar systems.



## Features

Model No.	RX 9365.750
Material	Polyamide (PA 6) Fire protection corresponding to UL 94
Colour	RAL 9005
To fit Model No.	9360.710 9360.720 9360.730 9360.705
Dimensions	Width: 45 mm Height: 60 mm
Packs of	8 pc(s).
Net weight	0,232 kg
Gross weight	0,247 kg
Customs tariff number	39269097
ETIM 9	EC002270

# Features

---

Product description

RiLineX extension block, width 45 mm, to extend the component adaptor by 60 mm for busbar systems.

# Approvals

---

Explanations

Declaration of conformity  
PCF-declaration