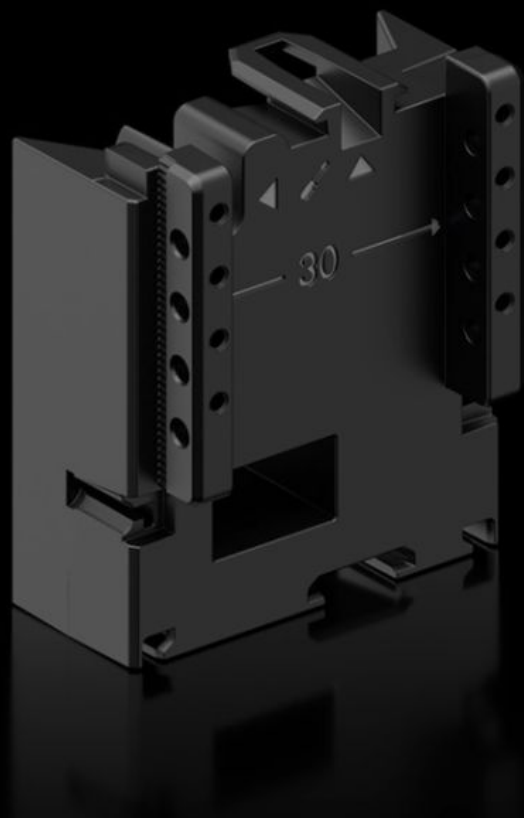


Rittal – The System.

Faster – better – everywhere.



RX 9365.751 RiLineX expansion block

State: 17.08.2025 (Source: [rittal.com/bg-bg](https://www.rittal.com/bg-bg))

ENCLOSURES

POWER DISTRIBUTION

CLIMATE CONTROL

IT INFRASTRUCTURE

SOFTWARE & SERVICES

FRIEDHELM LOH GROUP



RX 9365.751 - RiLineX expansion block for component adaptors and component supports

RiLineX extension block, width 54 mm, to extend the component adaptor by 60 mm for busbar systems.



Features

| | |
|-----------------------|--|
| Model No. | RX 9365.751 |
| Material | Polyamide (PA 6) Fire protection corresponding to UL 94 |
| Colour | RAL 9005 |
| To fit Model No. | 9360.740 9360.760 9360.780 9360.707 |
| Dimensions | Width: 54 mm Height: 60 mm |
| Packs of | 8 pc(s). |
| Net weight | 0.248 |
| Gross weight | 0.279 |
| Customs tariff number | 39269097 |
| ETIM 9 | EC002270 |

Approvals

Explanations

Declaration of conformity