

# Rittal – The System.

Faster – better – everywhere.



## SV 9640.251

## Maxi-PLS busbar, E-Cu

State: 07.05.2026 (Source: [rittal.com/bg-bg](http://rittal.com/bg-bg))

ENCLOSURES

POWER DISTRIBUTION

CLIMATE CONTROL

IT INFRASTRUCTURE

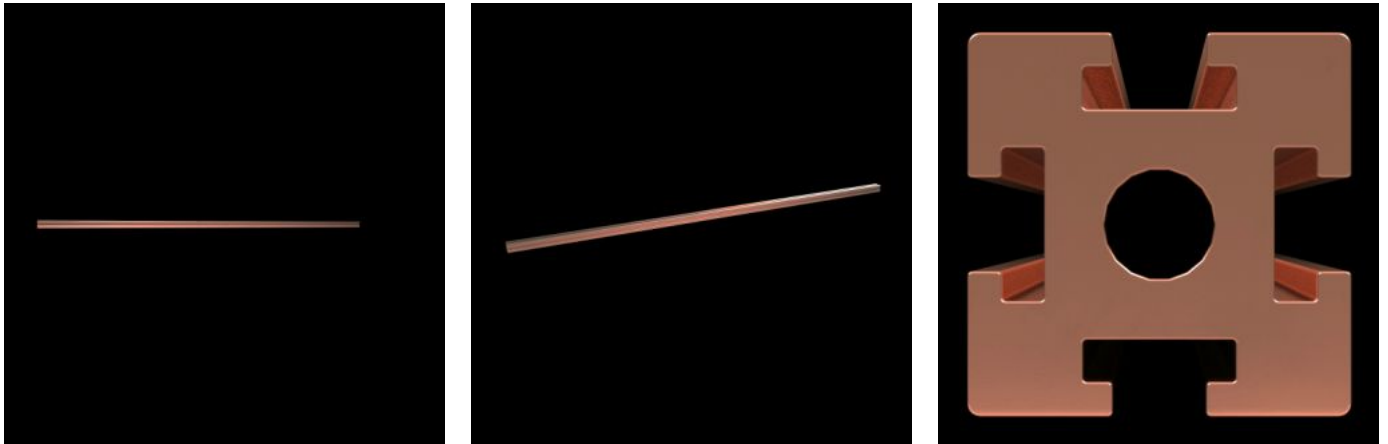
SOFTWARE & SERVICES

FRIEDHELM LOH GROUP



# SV 9640.251 - Maxi-PLS busbar, E-Cu for Maxi-PLS 45 system

Size: 45x45 mm, bar cross-section: 1354 mm<sup>2</sup>



## Features

Model No.	SV 9640.251
Product description	For assembling cable connection systems.
Material	E-Cu
Cross-section	1354 mm <sup>2</sup>
Length	799 mm
Note	May be cut individually to required length
To fit	Width: = 800 mm
Packs of	1 pc(s).
Net weight	9,3 kg
Gross weight	9,3 kg
Copper weight (kg per piece)	10,61
Customs tariff number	74071000
ETIM 9	EC000001
ECLASS 8.0	27370303
Product description	SV Maxi-PLS busbar E-Cu, L: 799 mm, Maxi-PLS 2000

# Approvals

---

Approvals

UL + C-UL (listed)

---

Explanations

Manufacturer's declaration

Declaration of conformity

Declaration of conformity UK