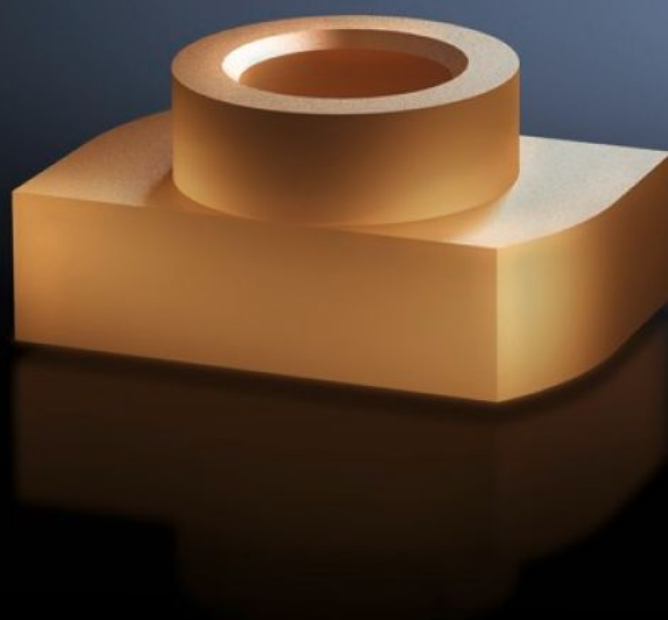


Rittal – The System.

Faster – better – everywhere.



SV 9640.910

Sliding nut

State: 09.05.2026 (Source: rittal.com/bg-bg)

ENCLOSURES

POWER DISTRIBUTION

CLIMATE CONTROL

IT INFRASTRUCTURE

SOFTWARE & SERVICES

FRIEDHELM LOH GROUP



SV 9640.910 - Sliding nut for Maxi-PLS busbars

May be retro-fitted by sliding into the Maxi-PLS busbar section.

Features

Model No.	SV 9640.910
Product description	For attaching flat copper bars and connection components to Maxi-PLS busbars. For sliding into the busbar section retrospectively and tightening the threaded bolts.
Material	E-Cu
To fit busbars	Maxi-PLS 45 S/45
Dimensions	Thread: M8
Packs of	15 pc(s).
Net weight	0,105 kg
Gross weight	0,119 kg
Customs tariff number	73181692
ETIM 9	EC000096
ECLASS 8.0	23110804
Product description	SV Sliding nut, M8, (Maxi-PLS 1600/2000)

Approvals

Approvals	UL + C-UL (listed)
-----------	--------------------