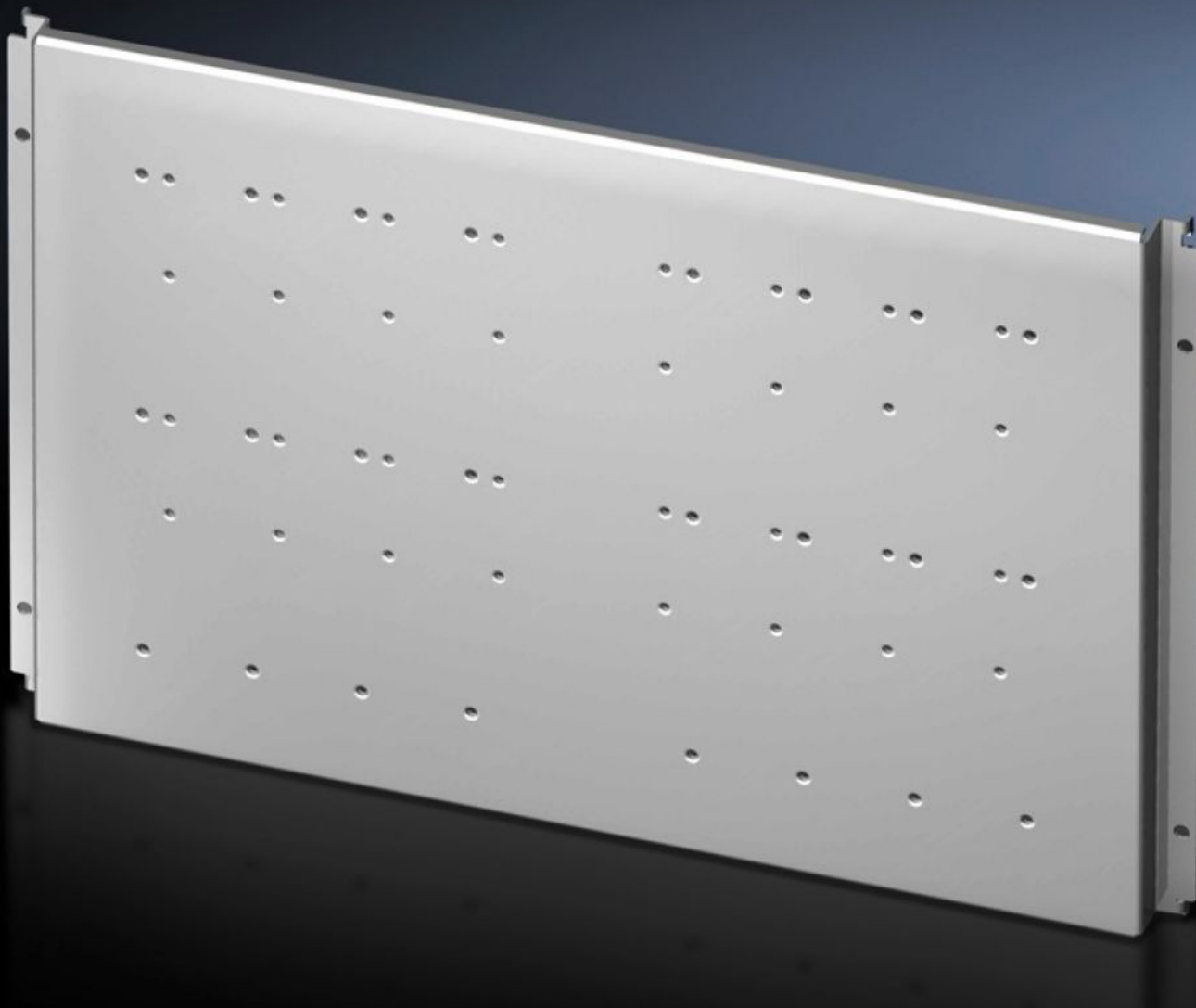


Rittal – The System.

Faster – better – everywhere.



SV 9674.008

System attachment

State: 15.05.2024 (Source: [rittal.com/bg-bg](https://www.rittal.com/bg-bg))

ENCLOSURES

POWER DISTRIBUTION

CLIMATE CONTROL

IT INFRASTRUCTURE

SOFTWARE & SERVICES

FRIEDHELM LOH GROUP



SV 9674.008 - System attachment for RiLine main busbar system

System attachment for rear assembly of a RiLine main busbar system.



Features

Model No.	SV 9674.008
Product description	System attachment with threaded holes M5 and M6 on a 50 mm pitch pattern for rear assembly of a RiLine60 main busbar system. For locating into the TS frame.
Material	Sheet steel
Surface finish	Zinc-plated
Supply includes	Assembly parts
To fit	Width: = 800 mm
Height	362 mm
Packs of	1 pc(s).
Weight/pack	5,2 kg
Customs tariff number	73269098
EAN	4028177543454
ETIM 7.0	EC001900
ECLASS 8.0	27400613