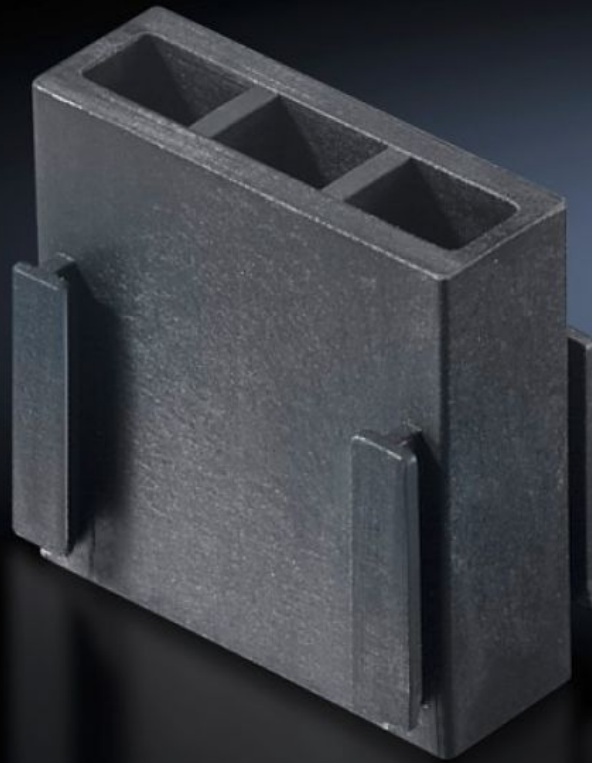


Rittal – The System.

Faster – better – everywhere.



SV 9676.008 Filler pieces

State: 06.05.2026 (Source: [rittal.com/bg-bg](https://www.rittal.com/bg-bg))

ENCLOSURES

POWER DISTRIBUTION

CLIMATE CONTROL

IT INFRASTRUCTURE

SOFTWARE & SERVICES

FRIEDHELM LOH GROUP



SV 9676.008 - Filler pieces

Vacant bar slots can be closed using the filler pieces.

Features

| | |
|--|---|
| Model No. | SV 9676.008 |
| Position of the bar system in the functional space | 2 3 |
| Note | When using only 1, 2 or 3 bars, the vacant bar slots should be closed using the filler pieces |
| To fit busbar system | Flat-PLS 60 Flat-PLS 100 |
| Packs of | 16 pc(s). |
| Net weight | 0,112 kg |
| Gross weight | 0,135 kg |
| Customs tariff number | 39239000 |
| ETIM 9 | EC001900 |
| ECLASS 8.0 | 27400613 |
| Product description | SV Filler piece, SV 9676002/004/020/21 |

Approvals

| | |
|-----------|--|
| Approvals | ABS DNV-GL Lloyds Register of Shipping |
|-----------|--|