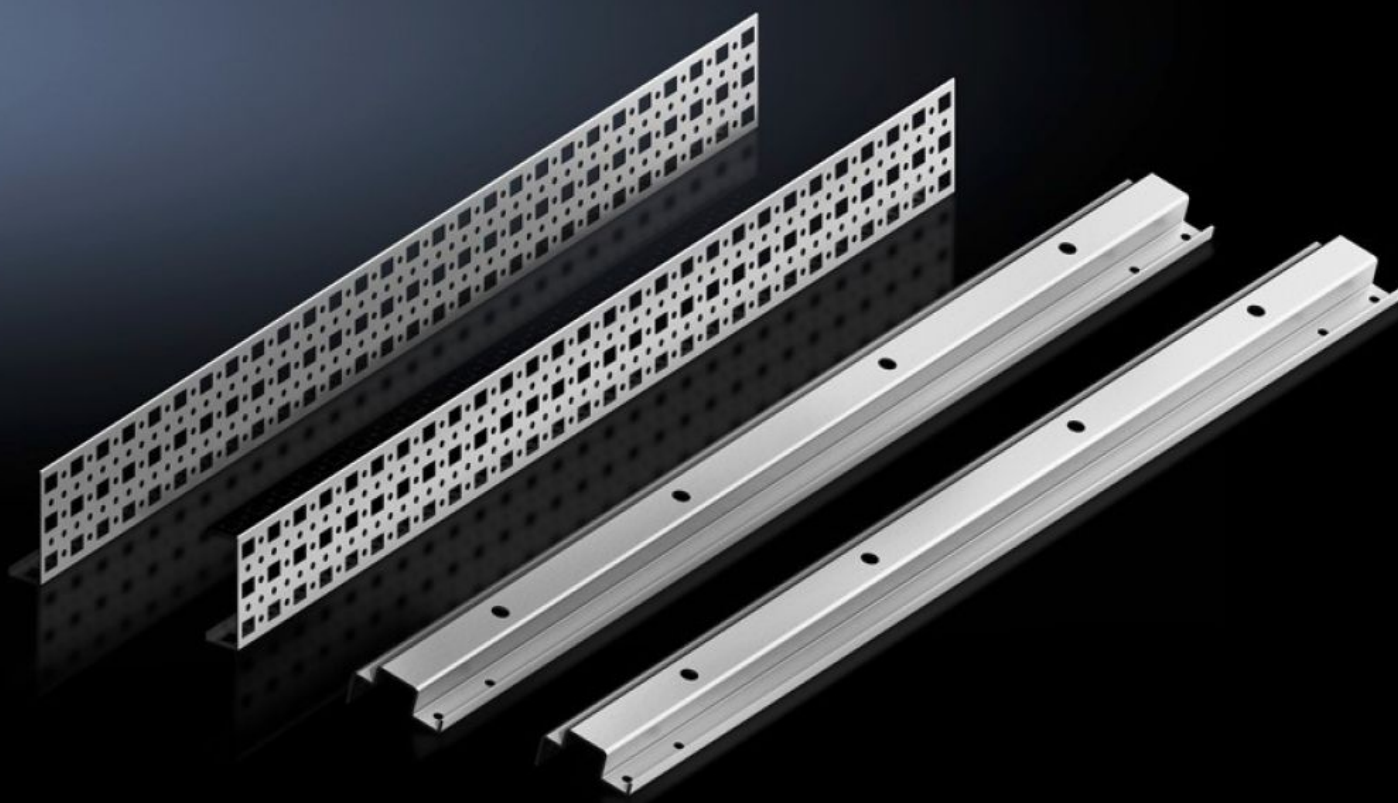


Rittal – The System.

Faster – better – everywhere.



SV 9677.510 System attachment

State: 30.05.2026 (Source: rittal.com/bg-bg)

ENCLOSURES

POWER DISTRIBUTION

CLIMATE CONTROL

IT INFRASTRUCTURE

SOFTWARE & SERVICES

FRIEDHELM LOH GROUP



SV 9677.510 - System attachment for TS, VX SE

For attaching busbar systems with 185 mm centre-to-centre spacing in TS/SE enclosures.

Features

Model No.	SV 9677.510
Product description	For attaching busbar systems with 185 mm centre-to-centre spacing in TS/SE enclosures.
Material	Sheet steel
Surface finish	Zinc-plated
Supply includes	2 system attachments (left/right) 2 punched sections without mounting flanges Assembly parts
Assembly instruction	For variable depth adjustment of the busbar system in the enclosure, the TS punched section with mounting flange 17 x 73 mm (for the outer mounting level) is additionally required. Select according to the enclosure depth.
Suitable for width	600 mm
Packs of	1 pc(s).
Net weight	3,5 kg
Gross weight	3,64 kg
Customs tariff number	83024900
ETIM 9	EC001900
ECLASS 8.0	27400613
Product description	SV System attachment, for busbar support, 185 mm centre distance, for TS, SE (B: 600 mm)