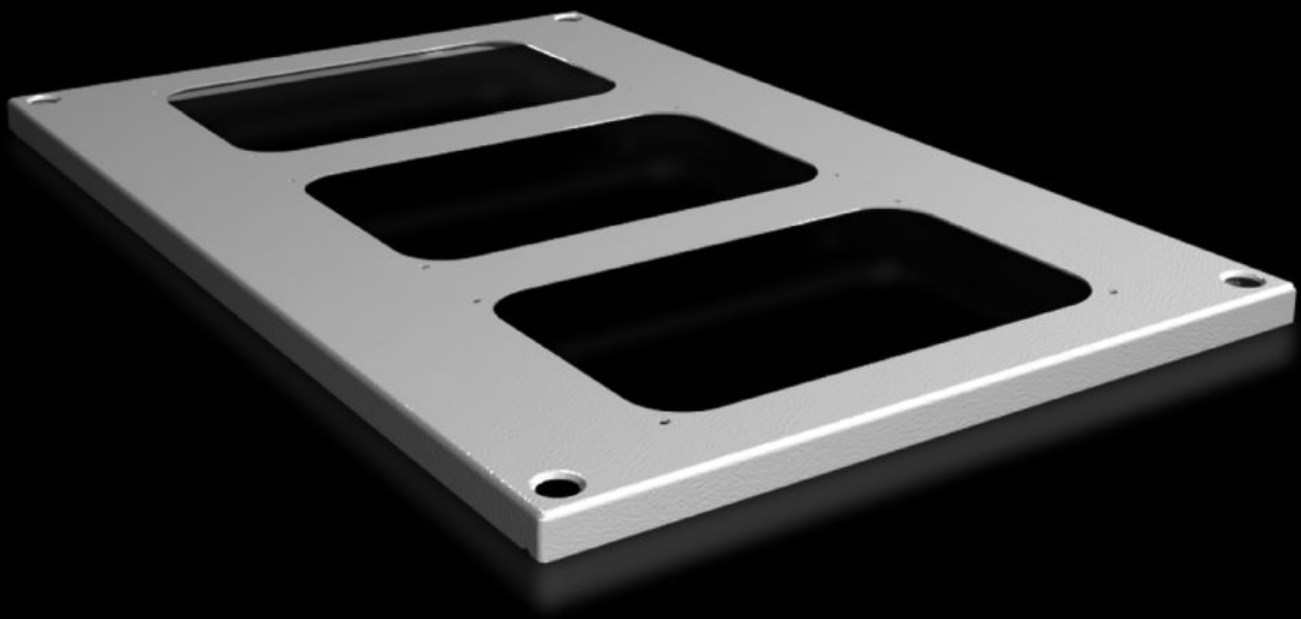


**Rittal – The System.**

Faster – better – everywhere.



**SV 9681.546**

**Roof plate for cable entry glands**

State: 22.05.2026 (Source: [rittal.com/bg-bg](http://rittal.com/bg-bg))

ENCLOSURES

POWER DISTRIBUTION

CLIMATE CONTROL

IT INFRASTRUCTURE

SOFTWARE & SERVICES

FRIEDHELM LOH GROUP



# SV 9681.546 - Roof plate for cable entry glands for VX, VX IT

For enclosures without roof plate and in exchange for the standard roof in other enclosures.

## Features

|                                       |  |
|---------------------------------------|--|
| Model No.                             | SV 9681.546  |
| Product description                   | For enclosures without roof plate and in exchange for the standard roof.                                       |
| Material                              | Sheet steel, 1.5 mm  |
| Surface finish                        | Textured paint   |
| Colour                                | RAL 7035   |
| Supply includes                       | Assembly parts   |
| Number of required cable entry glands | 3  |
| To fit                                | Width: = 400 mm<br>Depth: = 600 mm   |
| Packs of                              | 1 pc(s).   |
| Net weight                            | 1,72 kg  |
| Gross weight                          | 2,38 kg  |
| PCF per pack (cradle-to-gate)         | 5.8 kg CO2 eq (Cat B)  |
| Note on PCF category                  | Category B: PCF value (cradle-to-gate) based on the product weight, approximately calculated and self-declared |
| Customs tariff number                 | 94039910   |
| ETIM 9                                | EC000744   |
| ECLASS 8.0                            | 27182405   |
| Product description                   | VX Roof plate, Wdepth 400x600 mm, for cable entry glands   |

# Approvals

---

Explanations

Declaration of conformity UK