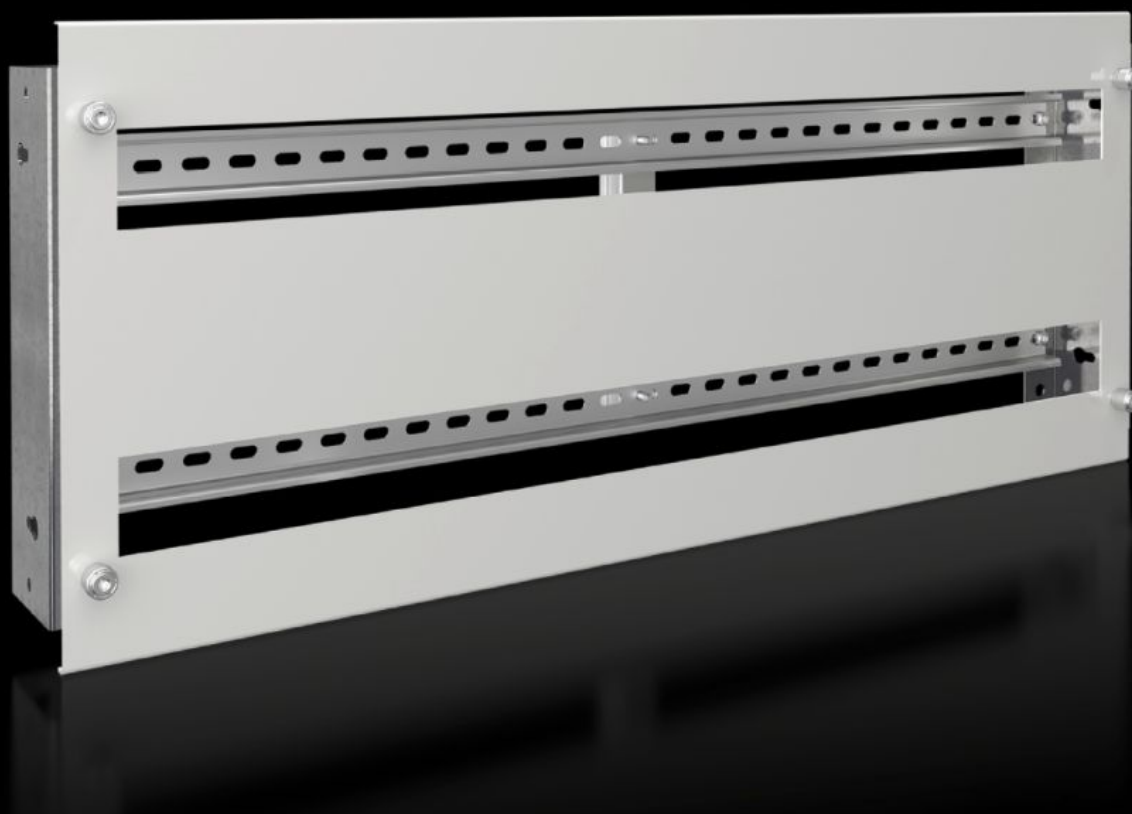


# Rittal – The System.

Faster – better – everywhere.



## SV 9683.783 Support frame

State: 22.08.2025 (Source: [rittal.com/bg-bg](https://www.rittal.com/bg-bg))

ENCLOSURES

POWER DISTRIBUTION

CLIMATE CONTROL

IT INFRASTRUCTURE

SOFTWARE & SERVICES

FRIEDHELM LOH GROUP



# SV 9683.783 - Support frame for DIN rail-mounted devices

Support frame set for accepting DIN rail-mounted devices (e.g. MCBs).

## Features

Model No.	SV 9683.783
Product description	Support frame set for accepting DIN rail-mounted devices (e.g. MCBs). The support rails are fastened with two mounting brackets to the compartment side panel. The cover is fastened to the support frame with knurled screws. In combination with functional space dividers, partial mounting plates and side panel modules, internal compartmentalisation in accordance with Form 2, 3 or 4 is possible.
Material	Support frame: Sheet steel, zinc-plated, passivated, 1.5 mm Cover: Sheet steel, spray finished, 1.5 mm
Supply includes	Support rails 2 mounting brackets 1 cover with cut-out Assembly parts
For compartment height	300 mm
To fit	Width: = 800 mm
No. of pitch units 17.5 mm	2 x 36
Packs of	1 pc(s).
Net weight	4
Gross weight	4.3
PCF per pack (cradle-to-gate)	16.4 kg CO2 eq (Cat B)
Note on PCF category	Category B: PCF value (cradle-to-gate) based on the product weight, approximately calculated and self-declared
Customs tariff number	39269097
EAN	4028177937338
ETIM 9	EC002270
ECLASS 8.0	27400613

# Approvals

---

Explanations

Declaration of conformity UK