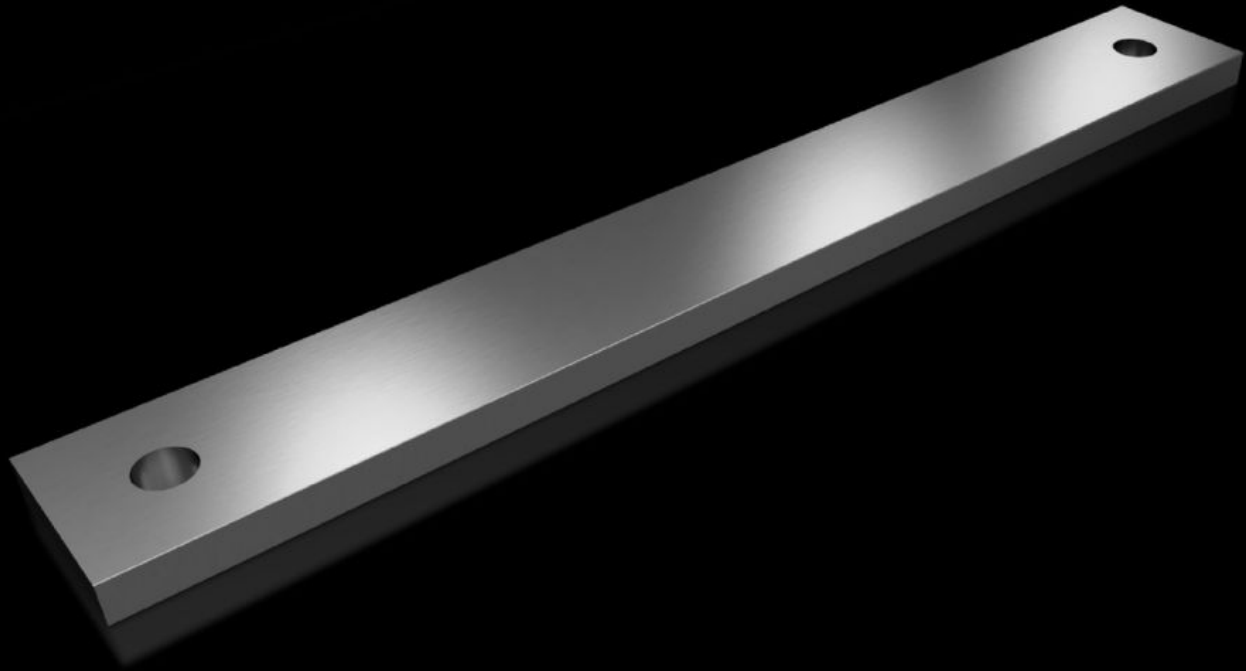


**Rittal – The System.**

Faster – better – everywhere.



**SV 9685.544**

**PE/PEN busbar E-Cu, tin-plated**

State: 13.05.2026 (Source: [rittal.com/bg-bg](http://rittal.com/bg-bg))

ENCLOSURES

POWER DISTRIBUTION

CLIMATE CONTROL

IT INFRASTRUCTURE

SOFTWARE & SERVICES

FRIEDHELM LOH GROUP



# SV 9685.544 - PE/PEN busbar E-Cu, tin-plated

With integral punchings.

## Features

Model No.	SV 9685.544
Material	E-Cu, tin-plated
Dimensions	Length: 300 mm
Cross-section	40 mm x 10 mm
Packs of	2 pc(s).
Net weight	2,1 kg
Gross weight	2,12 kg
Copper weight (kg per piece)	1,07
Customs tariff number	74071000
Product description	SV PE/PEN busbar E-Cu, tin-plated, WxH: 40x10 mm, L: 300 mm