

Rittal – The System.

Faster – better – everywhere.



HD 1315.600

Compact enclosure HD, single-door

State: 2026-07-09 (Source: [rittal.com/ca-en](https://www.rittal.com/ca-en))

ENCLOSURES

POWER DISTRIBUTION

CLIMATE CONTROL

IT INFRASTRUCTURE

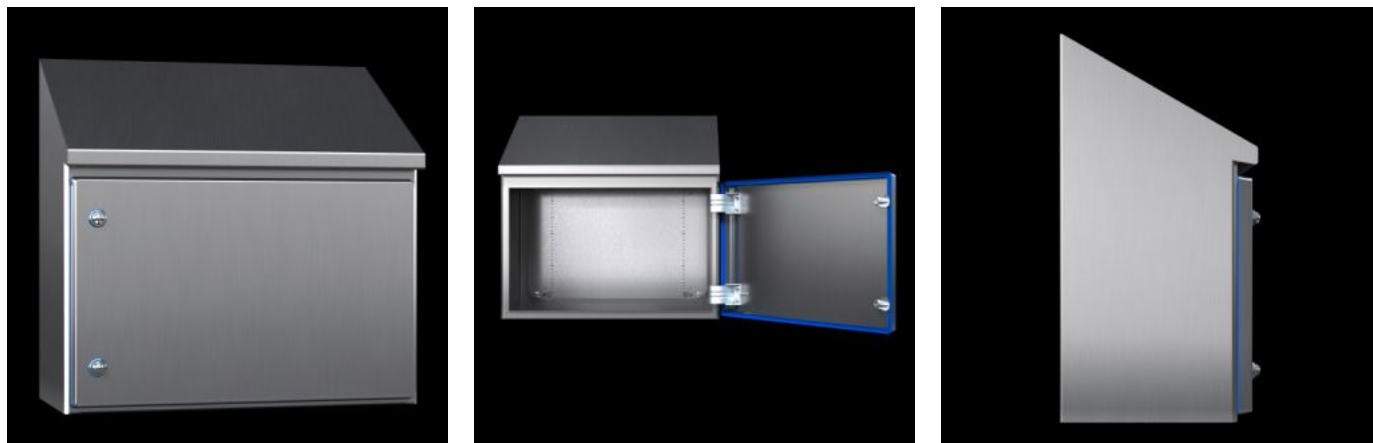
SOFTWARE & SERVICES

FRIEDHELM LOH GROUP



HD 1315.600 - Compact enclosure HD, single-door

Enclosure solution tailored to the requirements of the food and beverage industry. Roof angled forwards by 30°. Seal dyed blue to clearly distinguish it from foodstuffs



Features

Model No.	HD 1315.600
Version	Hygienic Design Enclosures
Product changes	From June 2020, the compact enclosure HD, single-door, comes with the new compact enclosure AX mounting plate.
Material	Housing and door: Stainless steel 1.4301 (AISI 304) Mounting plate: Carbon steel HD lock inserts: Stainless steel 1.4404 (AISI 316L) Seal: Silicone, compliant with FDA Guideline 21 CFR 177.2600
Surface finish	Housing and door: Brushed, grain 400, peak-to-valley height < 0.8 µm Mounting panel: Zinc-plated Seal: Blue, dyed (RAL 5010)
Supply includes	Housing of all-round solid construction Door with fitted seal Door hinged on the right, may be swapped to the left Mounting panel
Dimensions	Width: 810 mm Height, front: 650 mm Height rear: 821 mm Depth: 300 mm

Features

Dimensions of mounting plate (W x H)	750 mm x 575 mm
Door opening angle	125°
No. of locks	2
IK code	IK08
Base material	Stainless steel 1.4301 (AISI 304)
Protection category IP to IEC 60529	IP 66 IP X9
Protection category NEMA	NEMA 1 NEMA 3 NEMA 3X NEMA 4 NEMA 4X NEMA 12 NEMA 13
Type rating according to UL 50E	Type 1 Type 3 Type 3X Type 4 Type 4X Type 12 Type 13
Packaging unit	1 pc(s).
Net weight	39 kg
Gross weight	39.5 kg
PCF/VE (cradle-to-gate)	121.98
Customs tariff number	94032080
ETIM 9	EC000261
ETIM 8	EC000261
ECLASS 8.0	27180101
Product description	HD Compact enclosure, WHD: 810x650(H1)x821(H2)x300 mm, Stainless steel 1.4301, with mounting plate, with hinged door and silicone seal

Approvals

Approvals

UL + C-UL (listed)

Explanations

Declaration of conformity

Declaration of conformity UK

PCF-declaration