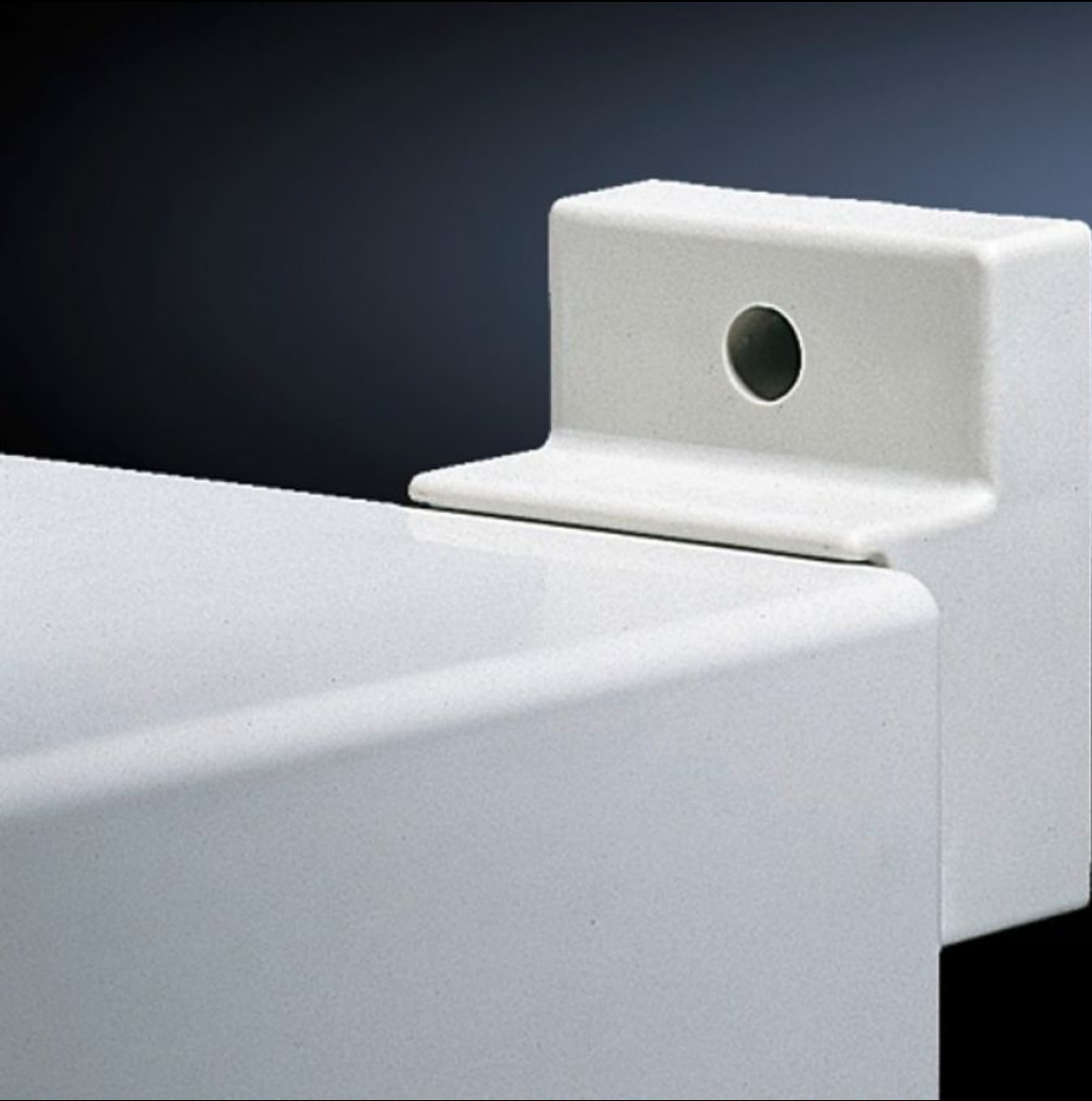


Rittal – The System.

Faster – better – everywhere.



KS 1483.010

Wall mounting bracket

State: 2026-05-07 (Source: rittal.com/ca-en)

ENCLOSURES

POWER DISTRIBUTION

CLIMATE CONTROL

IT INFRASTRUCTURE

SOFTWARE & SERVICES

FRIEDHELM LOH GROUP



KS 1483.010 - Wall mounting bracket for KS

For external mounting of the housing. Wall clearance 30 mm.

Features

Model No.	KS 1483.010
Product description	To enable wall-mounting of the enclosure from the outside of the enclosure only.
Material	Fiberglass-reinforced polyamide
Color	Similar to RAL 7035
Supply includes	Assembly components for mounting on the enclosure
Installation options	For external mounting on the housing
Suitable for	Enclosure type: KS
Packaging unit	4 pc(s).
Net weight	0.16 kg
Gross weight	0.228 kg
Customs tariff number	73269098
ETIM 9	EC002625
ETIM 8	EC002625
ECLASS 8.0	27189234
Product description	KS Wall mounting bracket, for KS, similar RAL 7035