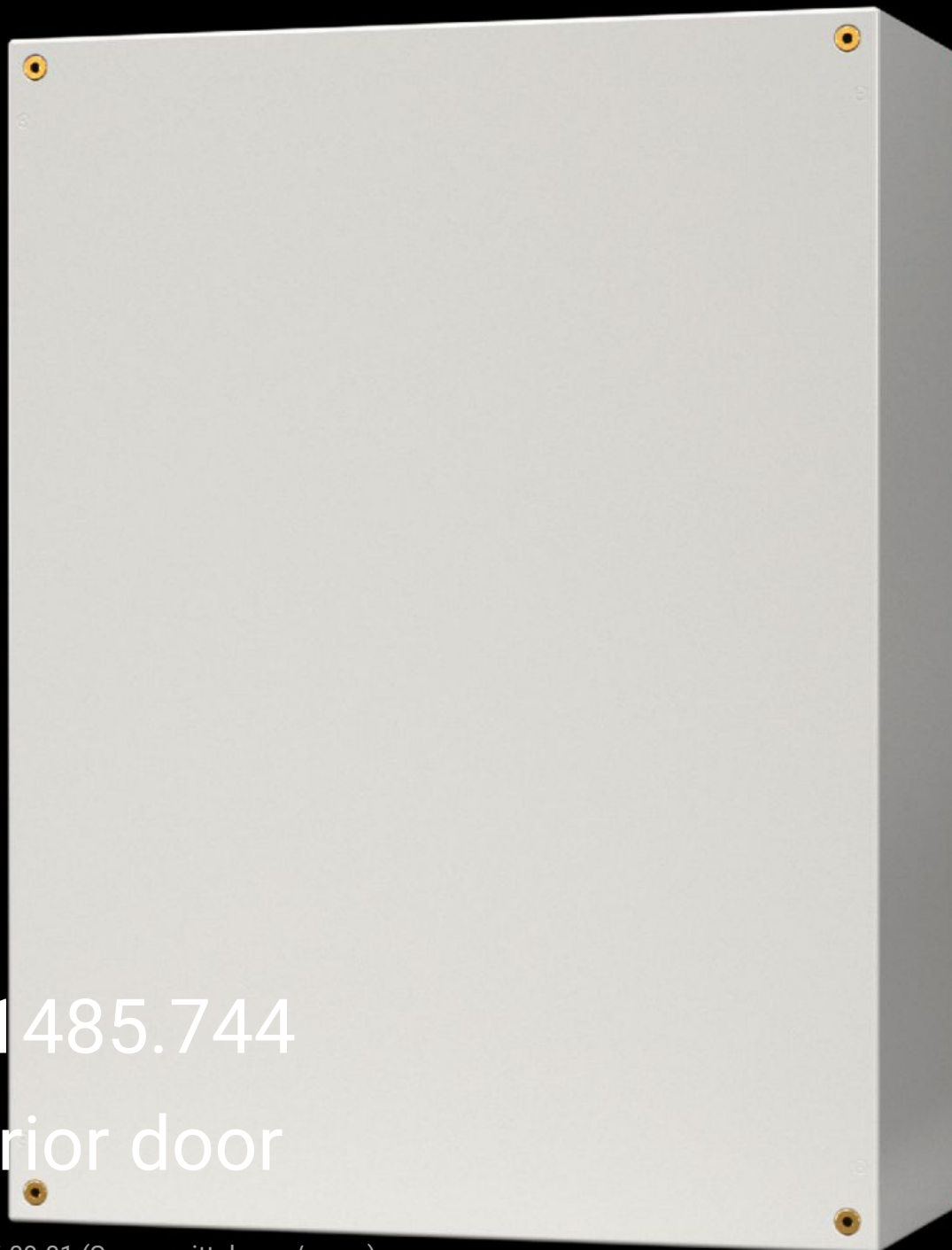
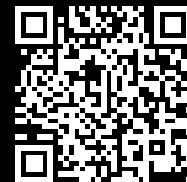


Rittal – The System.

Faster – better – everywhere.



SZ 1485.744
Interior door

State: 2025-09-01 (Source: [rittal.com/ca-en](https://www.rittal.com/ca-en))

ENCLOSURES

POWER DISTRIBUTION

CLIMATE CONTROL

IT INFRASTRUCTURE

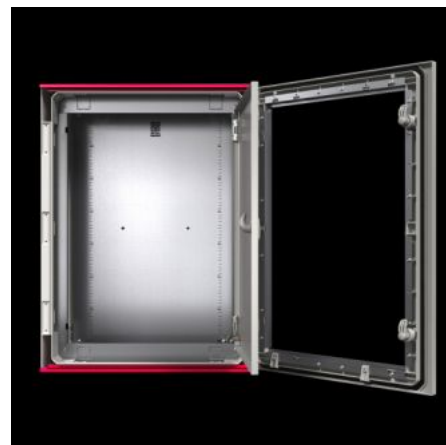
SOFTWARE & SERVICES

FRIEDHELM LOH GROUP



SZ 1485.744 - Interior door for AX Fiberglass-Reinforced Polyester Enclosures

For reliable access protection. Separation of the operating and equipment levels.



Features

Model No.	SZ 1485.744
Material	Door and door frame: Carbon steel
Surface finish	Door: Powder-coated, textured paint Door frame: Zinc-plated
Color	Door: RAL 7035
Supply includes	Door Cam lock with 3 mm double-bit insert Assembly screws
Installation options	In AX fiberglass-reinforced polyester on fixing domes in the side walls
Note	Standard double-bit lock insert may be exchanged for 27 mm lock inserts, type A
Suitable for enclosure type	AX plastic
Suitable for width	400 mm
Suitable for height	400 mm
Material thickness - door	1 mm

Features

Door opening angle	105°
Packaging unit	1 pc(s).
Net weight	1.94
Gross weight	2.04
Customs tariff number	94039910
EAN	4028177965874
ETIM 9	EC000747
ETIM 8	EC000747
ECLASS 8.0	27182204