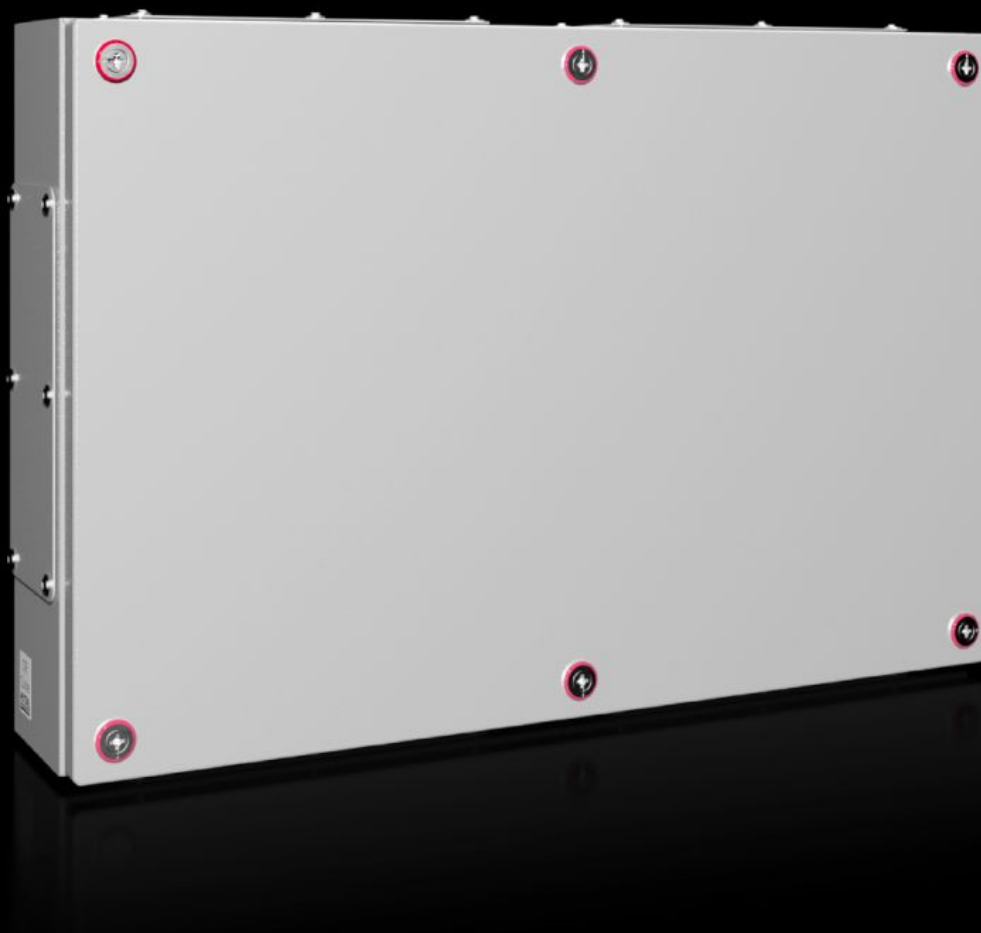


Rittal – The System.

Faster – better – everywhere.



KX 1540.000

KX terminal box, carbon steel with flange

State: 2025-07-27 (Source: [rittal.com/ca-en](https://www.rittal.com/ca-en))

ENCLOSURES

POWER DISTRIBUTION

CLIMATE CONTROL

IT INFRASTRUCTURE

SOFTWARE & SERVICES

FRIEDHELM LOH GROUP



KX 1540.000 - KX terminal box, carbon steel with flange

The small enclosure KX, terminal box KX, with a gland plate allows for flexible interior installation and simple cable entry with optimum use of space.



Features

Model No.	KX 1540.000
Material	Housing: Carbon steel Cover: Carbon steel, all-round foamed-in PU seal
Surface finish	Housing and cover: Dipcoat primed, powder-coated on the outside, textured paint
Color	RAL 7035
Supply includes	Housing with cover Mini-fasteners Carbon steel flange plates with seals and assembly components
Protection category NEMA	NEMA 1 NEMA 12
Protection category IP to EN 60 529	IP 55
Type rating according to UL 50E	Type 1 Type 12
IK code	IK08

Features

Dimensions	Width: 600 mm Height: 400 mm Depth: 120 mm
Material thickness - cover	1.25 mm
Material thickness - enclosure	1.25 mm
Flange Plates	: 1 + 1 : 2 + 2
Base material	Carbon steel
Packaging unit	1 pc(s).
Net weight	8.444
Gross weight	8.7
PCF/VE (cradle-to-gate)	35.4 kg CO2 eq (Cat B)
Information regarding the PCF class	Category B: PCF value (cradle-to-gate) calculated approximately on the basis of the product weight and self-declared
Customs tariff number	84879090
EAN	4028177816459
E-Number Sweden	E3465211
ETIM 9	EC000261
ETIM 8	EC000261
ECLASS 8.0	27180101

Approvals

Approvals	Bureau Veritas DNV-GL Lloyds Register of Shipping UL + C-UL (listed)
Certificates	Protection category

Approvals

Explanations

Declaration of conformity

Declaration of conformity UK

PCF-declaration