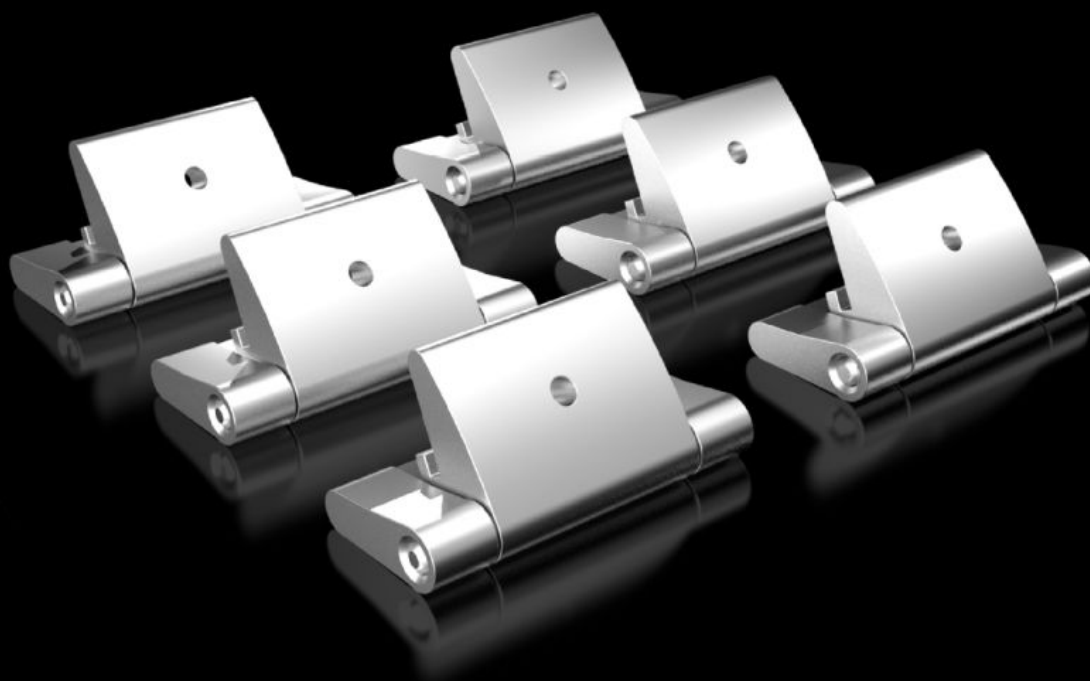


Rittal – The System.

Faster – better – everywhere.



KX 1592.200 Cover hinge

State: 2026-02-09 (Source: [rittal.com/ca-en](https://www.rittal.com/ca-en))

ENCLOSURES

POWER DISTRIBUTION

CLIMATE CONTROL

IT INFRASTRUCTURE

SOFTWARE & SERVICES

FRIEDHELM LOH GROUP



KX 1592.200 - Cover hinge For KX terminal box

The cover hinge can be screwed circumferentially to the enclosure protection channel and to the lip of the cover. The position of the mounting holes are pre-punched, no measurement or marking is required. For extending the door opening angle to 180°.

Features

Model No.	KX 1592.200
Product description	The cover hinge can be screwed circumferentially to the enclosure protection channel and to the lip of the cover. The position of the mounting holes are pre-punched, no measurement or marking is required.
Material	Die-cast zinc
Supply includes	Cover hinge Stoppers Assembly components
Note	For a door opening angle up to 180°
Packaging unit	6 pc(s).
Net weight	0.12
Gross weight	0.155
Customs tariff number	83021000
EAN	4028177938069
ETIM 9	EC001167
ETIM 8	EC001167
ECLASS 8.0	27409219