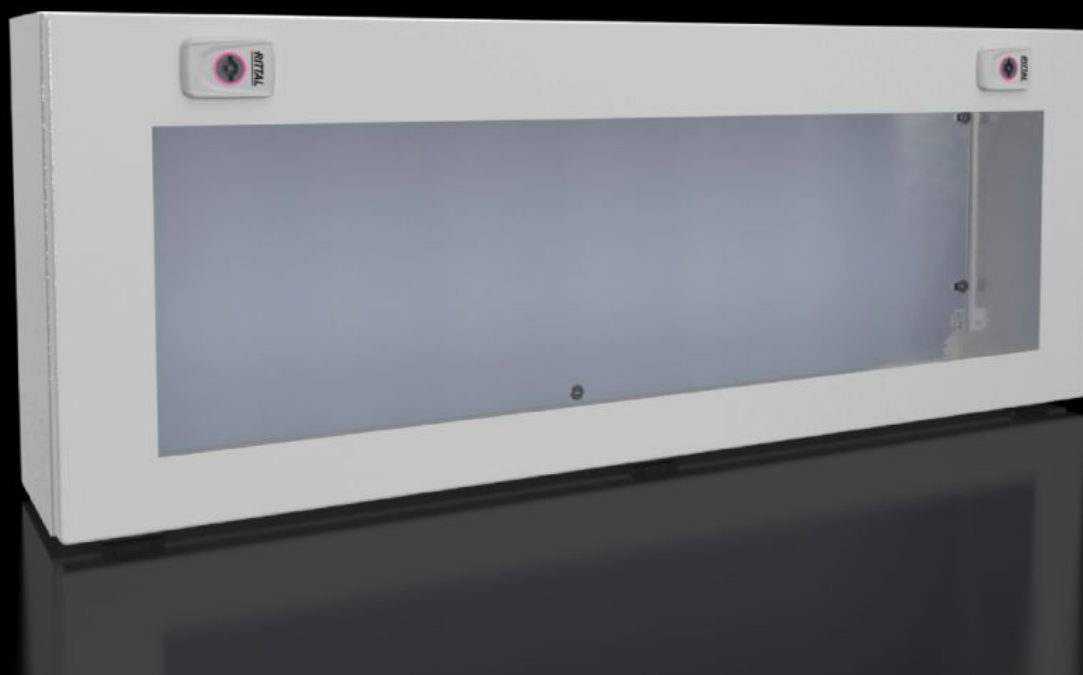


# Rittal – The System.

Faster – better – everywhere.



## KX 1613.100

### Bus housing KX, carbon steel, with double-bit insert

State: 2025-07-17 (Source: [rittal.com/ca-en](https://www.rittal.com/ca-en))

ENCLOSURES

POWER DISTRIBUTION

CLIMATE CONTROL

IT INFRASTRUCTURE

SOFTWARE & SERVICES

FRIEDHELM LOH GROUP



# KX 1613.100 - Bus housing KX, carbon steel, with double-bit insert

Wall-mounted enclosure made of carbon steel, with cover and viewing window. Protection category IP 65/NEMA 12. For installation of most brands of bus modules and sensors.



## Features

Model No.	KX 1613.100
Version	with viewing window
Material	Housing: Carbon steel Cover: Carbon steel, all-round foamed-in PU seal Viewing window: Polycarbonate, 4 mm1 Mounting plate: Carbon steel, zinc-plated
Surface finish	Housing and cover: Dipcoat primed, powder-coated on the outside, textured paint
Color	RAL 7035
Supply includes	Housing with hinged cover Sight glass in cover Mounting panel Cam lock with 3 mm double-bit insert
Protection category NEMA	NEMA 1 NEMA 12
Protection category IP to EN 60529	IP 65

# Features

Type rating according to UL 50E	Type 1 Type 12
IK code	IK08
Dimensions	Width: 800 mm Height: 300 mm Depth: 155 mm
Material thickness - cover	1.25 mm
Material thickness - enclosure	1.25 mm
Material thickness – mounting plate	2 mm
Base material	Carbon steel
Packaging unit	1 pc(s).
Net weight	12
Gross weight	12.111
PCF/VE (cradle-to-gate)	40.9 kg CO2 eq (Cat B)
Information regarding the PCF class	Category B: PCF value (cradle-to-gate) calculated approximately on the basis of the product weight and self-declared
Customs tariff number	94032080
EAN	4028177970038
ETIM 9	EC000261
ETIM 8	EC000261
ECLASS 8.0	27180101

# Approvals

Approvals	C-UL
-----------	------