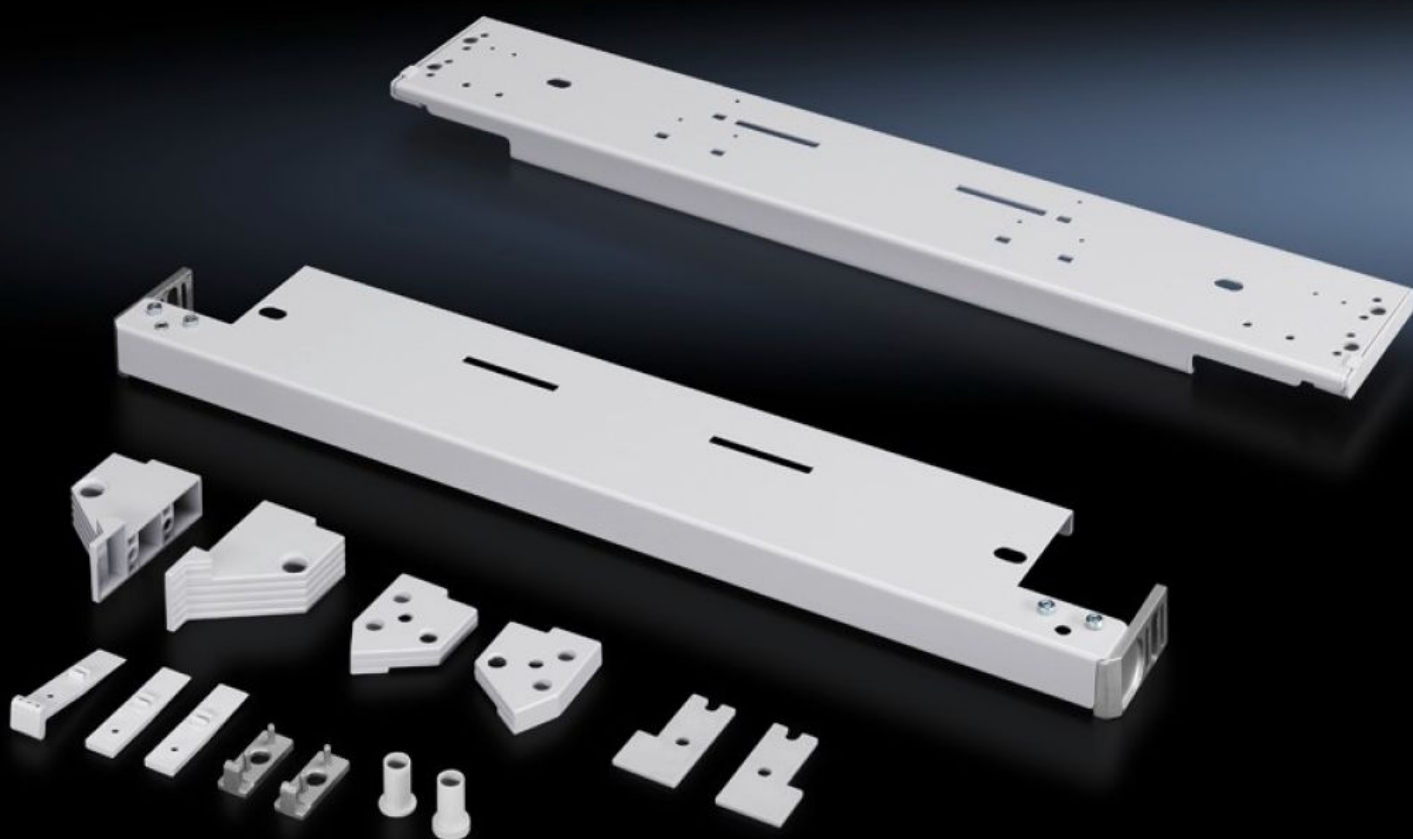


# Rittal – The System.

Faster – better – everywhere.



## SR 1997.235 Installation kit

State: 2026-01-31 (Source: [rittal.com/ca-en](https://www.rittal.com/ca-en))

ENCLOSURES

POWER DISTRIBUTION

CLIMATE CONTROL

IT INFRASTRUCTURE

SOFTWARE & SERVICES

FRIEDHELM LOH GROUP



# SR 1997.235 - Installation kit for pivoting frame, large, with trim panel

For installing the large swivel frame with panel.

## Features

Model No.	SR 1997.235
Material	Carbon steel
Color	RAL 7035
Supply includes	Assembly components for mounting on the enclosure
Opening angle	180°
Installation options	On pivoting frame with 19" level, side On pivoting frame with 19" level, center
Load capacity, static	1,200 N
Note to permissible static load max.	Maximum load 800 N with the TS mounting plate slide rail dismantled.
Suitable for	Enclosure type: TS SE Width: = 800 mm
Suitable for enclosure type	TS SE
Packaging unit	1 pc(s).
Net weight	5.804
Gross weight	6.109
Customs tariff number	83024900
EAN	4028177164949
ETIM 9	EC002625
ETIM 8	EC002625
ECLASS 8.0	27189234