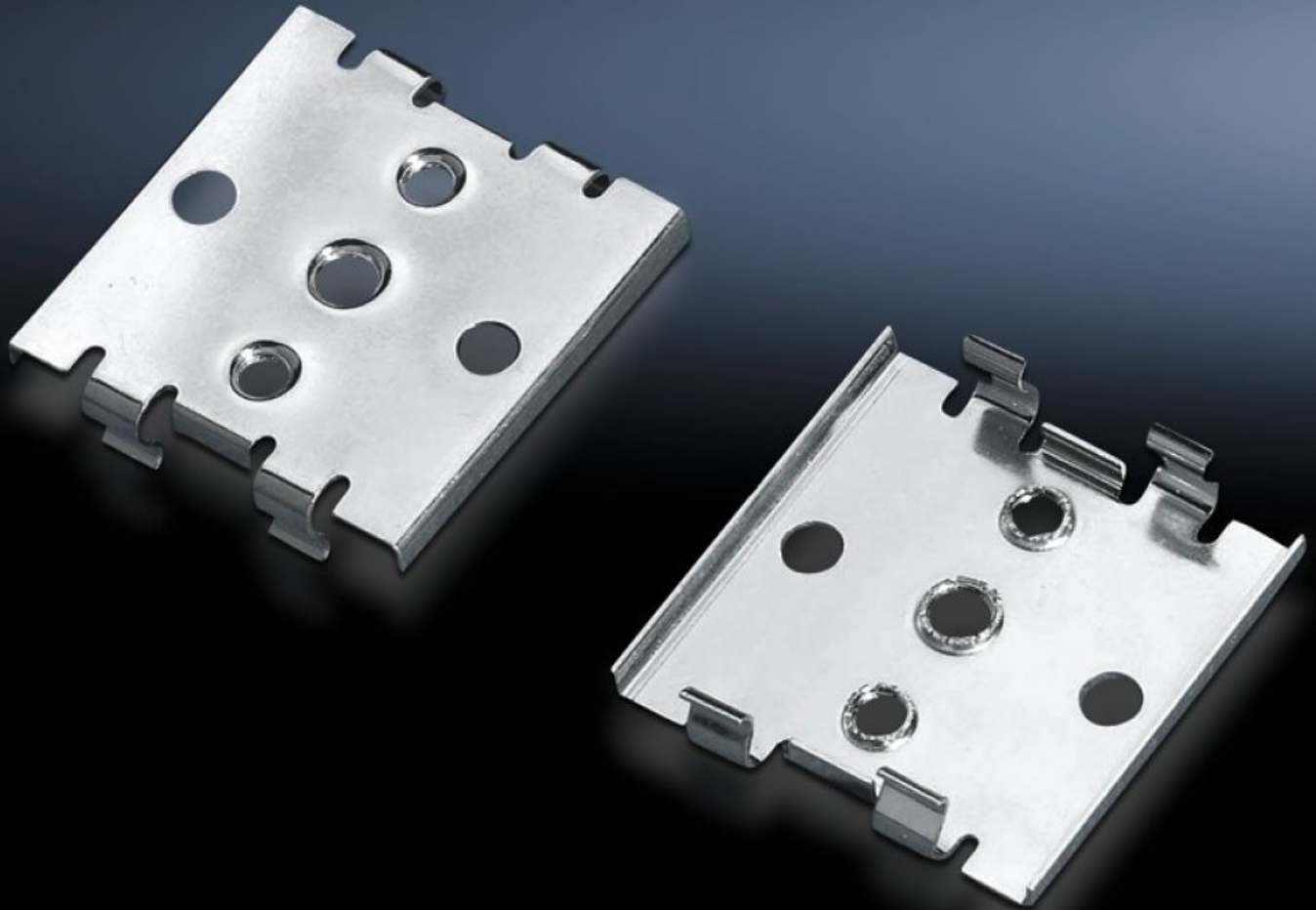


**Rittal – The System.**

Faster – better – everywhere.



# SZ 2309.000 Mounting clip

State: 2026-07-09 (Source: [rittal.com/ca-en](http://rittal.com/ca-en))

ENCLOSURES

POWER DISTRIBUTION

CLIMATE CONTROL

IT INFRASTRUCTURE

SOFTWARE & SERVICES

FRIEDHELM LOH GROUP



# SZ 2309.000 - Mounting clip for support rails

For fast and secure attaching of cable ducts, mounting plates and horizontal rails on 35/7.5 and 35/15 support bars as per EN 60 715.

## Features

Model No.	SZ 2309.000
Product description	For fast and secure attaching of cable ducts, mounting plates and horizontal rails on 35/7.5 and 35/15 support bars as per EN 60 715.
Benefits	Simply fit the mounting clip to the part to be installed and then snap it onto the support rail
Material	Spring plate
Packaging unit	30 pc(s).
Net weight	0.18 kg
Gross weight	0.196 kg
PCF/VE (cradle-to-gate)	0.8 kg CO2 eq (Cat B)
Information regarding the PCF class	Category B: PCF value (cradle-to-gate) calculated approximately on the basis of the product weight and self-declared
Customs tariff number	39269097
ETIM 9	EC002625
ETIM 8	EC002625
ECLASS 8.0	27189234
Product description	SZ Mounting clip, for support rail