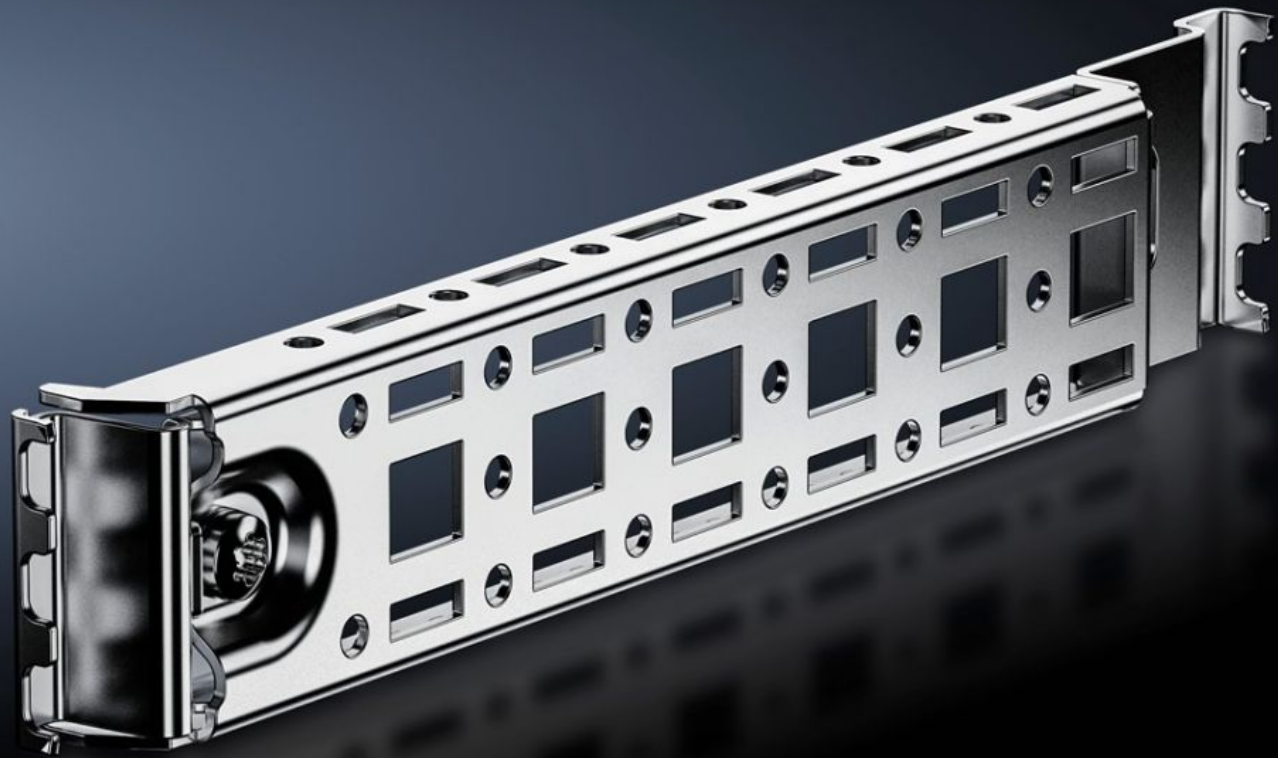


**Rittal – The System.**

Faster – better – everywhere.



**AX 2393.210**

**Rail for Interior Installation AX**

State: 2026-06-17 (Source: [rittal.com/ca-en](http://rittal.com/ca-en))

ENCLOSURES

POWER DISTRIBUTION

CLIMATE CONTROL

IT INFRASTRUCTURE

SOFTWARE & SERVICES

FRIEDHELM LOH GROUP



# AX 2393.210 - Rail for Interior Installation AX

For mounting in the enclosure, no machining required. Suitable for mounting on the side, base and roof up to a load of 25 N using the locators integrated into the enclosure.

## Features

Model No.	AX 2393.210
Product description	For mounting in the enclosure, no machining required. Suitable for mounting on the side, base and roof up to a load of 25 N using the locators integrated into the enclosure. Variable with two rows of system holes, creates additional mounting surface for e.g.: System chassis 14 x 39 mm, enclosure lights, door-operated switch, door stay, cable conduit holder.
Benefits	Only one screw needed to secure the rail in the housing Incl. adapter for door-operated switch Compatibility with VX25 system accessories Housing protection category is retained (no machining required) Automatic potential equalization Can also be retrofitted with built-in mounting plate. Installation using flange (gland) plates possible
Material	Carbon steel
Surface finish	Zinc-plated
Mounting tip	For installing LED system light, only in conjunction with mounting bracket for interior installation
Suitable for	Enclosure type: AX Depth: = 210 mm
Packaging unit	4 pc(s).
Net weight	0.536 kg
Gross weight	0.632 kg
Customs tariff number	73269098
ECLASS 8.0	27189234
Product description	AX Rail for interior installation, for D: 210 mm