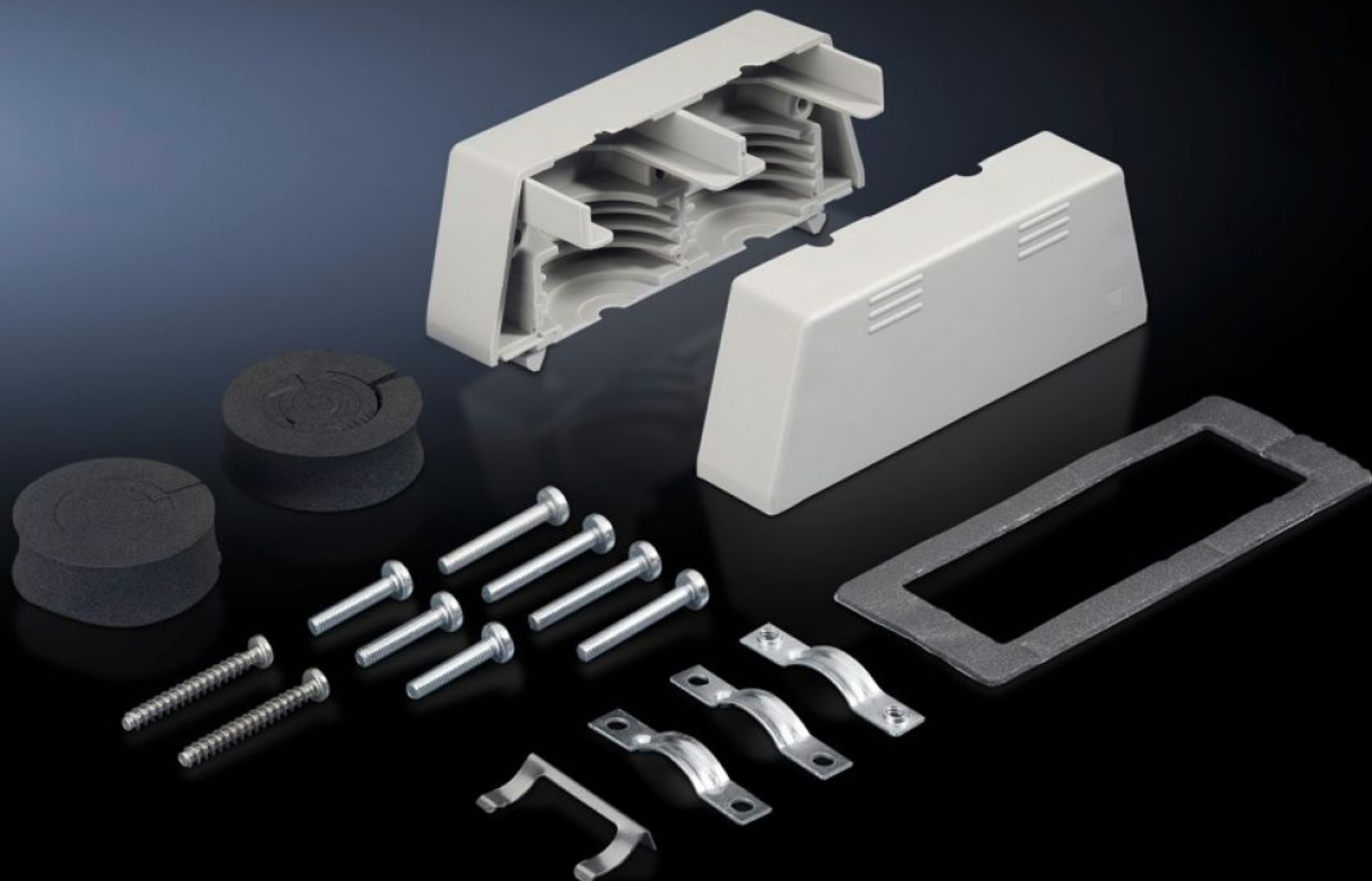


Rittal – The System.

Faster – better – everywhere.



SZ 2400.000 Connector gland

State: 2025-12-21 (Source: [rittal.com/ca-en](https://www.rittal.com/ca-en))

ENCLOSURES

POWER DISTRIBUTION

CLIMATE CONTROL

IT INFRASTRUCTURE

SOFTWARE & SERVICES

FRIEDHELM LOH GROUP



SZ 2400.000 - Connector gland for connector cut-outs (24-pole)

For the entry of 2 pre-assembled cables in the connector cut-out, without dismantling the connector.

Features

Model No.	SZ 2400.000
Product description	For the entry of 2 pre-assembled cables in the connector cut-out, without dismantling the connector.
Material	Housing: Plastic Clamps: Carbon steel
Surface finish	Clamps: Zinc-plated
Supply includes	2 half-shells Mounting clamp Assembly components
Dimensions	Width: 142 mm Height: 50 mm Depth: 54 mm
For cable diameters	8 - 36 mm
Packaging unit	1 pc(s).
Net weight	0.27
Gross weight	0.291
PCF/VE (cradle-to-gate)	1.1 kg CO2 eq (Cat B)
Information regarding the PCF class	Category B: PCF value (cradle-to-gate) calculated approximately on the basis of the product weight and self-declared
Customs tariff number	39269097
EAN	4028177022263
ETIM 9	EC000211
ETIM 8	EC000211

Features

ECLASS 8.0

27142421