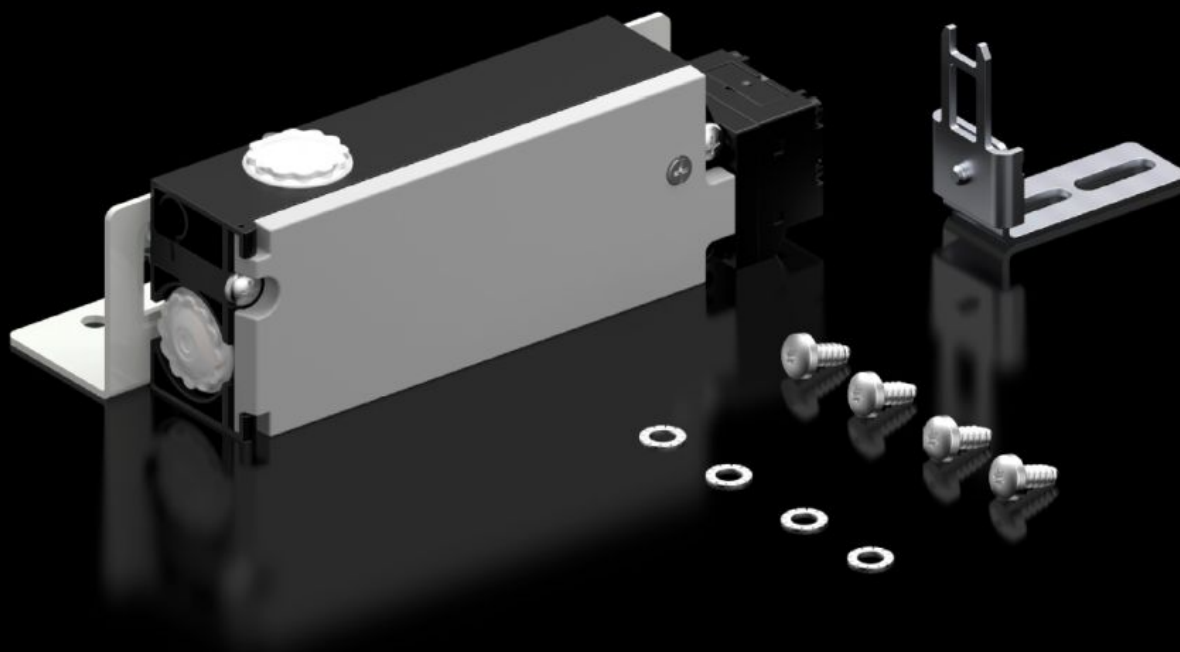


Rittal – The System.

Faster – better – everywhere.



SZ 2418.000

Safety lock

State: 2026-02-08 (Source: [rittal.com/ca-en](https://www.rittal.com/ca-en))

ENCLOSURES

POWER DISTRIBUTION

CLIMATE CONTROL

IT INFRASTRUCTURE

SOFTWARE & SERVICES

FRIEDHELM LOH GROUP



SZ 2418.000 - Safety lock

Fitted to doors, to protect against contact with live electrical equipment while the master switch is ON.

Features

Model No.	SZ 2418.000
Product description	Fitted to doors, to protect against contact with live electrical equipment while the master switch is ON.
Function principle	Locks the door when the main switch is ON. Mains power (voltage) is only enabled whilst the door is closed. Monitoring of the lock magnet via an additional closing contact.
Supply includes	Lock Actuator Angle bracket Fasteners
Mounting tip	In the case of double-door enclosures, the door-operated switch is required for the overlapping door to indicate "enclosure door closed"
Suitable for	Enclosure type: VX Enclosure type: VX SE Enclosure type: TS Enclosure type: AX
Rated power P_{el}	with DC: 8 W
Rated operating voltage	24 V (DC)
Rated insulation voltage	400 V AC
Rated impulse withstand voltage, phase to phase	4000 V AC
Packaging unit	1 pc(s).
Net weight	0.76
Gross weight	0.847
Customs tariff number	85365019
EAN	4028177022690

Features

ETIM 9	EC002626
ETIM 8	EC002626
ECLASS 8.0	27189266

Approvals

Approvals	CSA UL
Explanations	Declaration of conformity Declaration of conformity UK