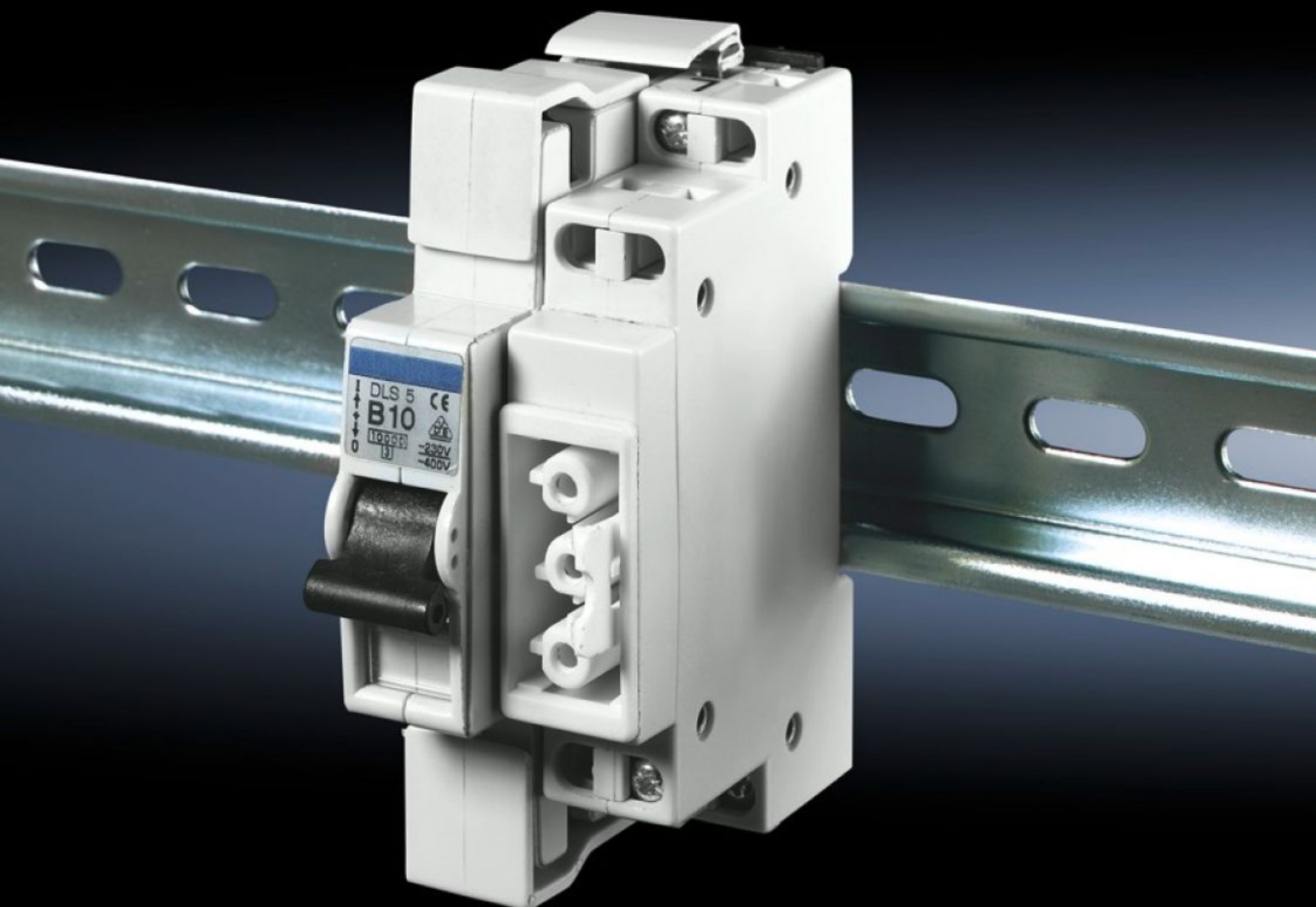


Rittal – The System.

Faster – better – everywhere.



SZ 2507.500

Connection component with circuit-breaker 10 A

State: 2025-07-02 (Source: [rittal.com/ca-en](https://www.rittal.com/ca-en))

ENCLOSURES

POWER DISTRIBUTION

CLIMATE CONTROL

IT INFRASTRUCTURE

SOFTWARE & SERVICES

FRIEDHELM LOH GROUP



SZ 2507.500 - Connection component with circuit-breaker 10 A

Connection component that snaps onto a top hat rail.

Features

Model No.	SZ 2507.500
Product description	Connection component that snaps onto a top hat rail
Benefits	Reduce installation costs: System lights and workstation lights are supplied with power quickly and reliably through the connection cable
Rated impulse withstand voltage, phase to phase	4000 V AC
Rated insulation voltage	400 V AC
Mounting tip	Use connector 2507.200 if you are configuring cables yourself
Rated operating voltage	230 V - 400 V
Packaging unit	1 pc(s).
Net weight	0.179
Gross weight	0.197
Customs tariff number	85369095
EAN	4028177233409
ETIM 9	EC002625
ETIM 8	EC002625
ECLASS 8.0	27189234

Approvals

Certificates	EAC
--------------	-----

Approvals

Explanations

Declaration of conformity

Declaration of conformity UK