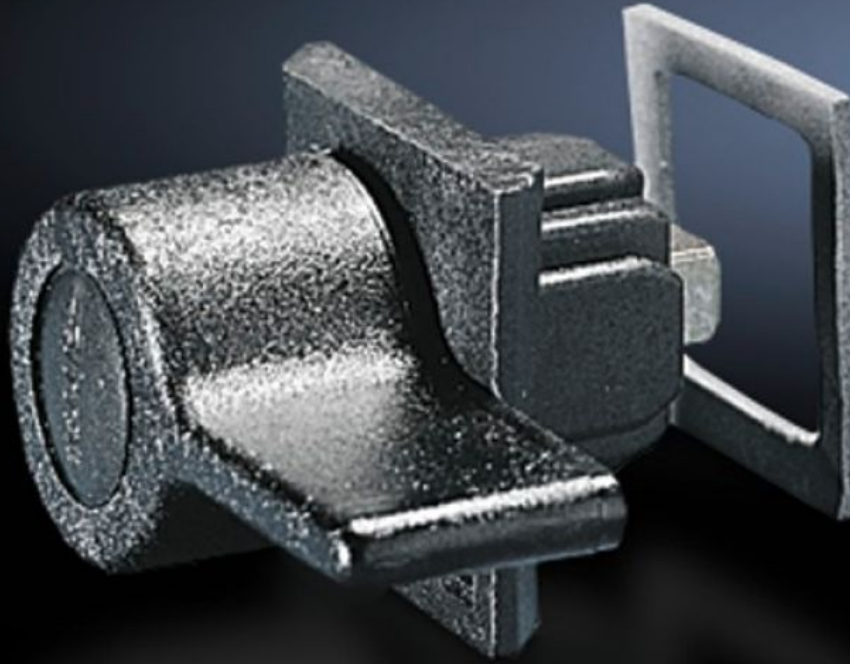


# Rittal – The System.

Faster – better – everywhere.



## SZ 2533.000 Plastic Handles

State: 2026-05-08 (Source: [rittal.com/ca-en](http://rittal.com/ca-en))

ENCLOSURES

POWER DISTRIBUTION

CLIMATE CONTROL

IT INFRASTRUCTURE

SOFTWARE & SERVICES

FRIEDHELM LOH GROUP



# SZ 2533.000 - Plastic Handles

Alternative to standard lock inserts, for use with or without a lock cylinder.



## Features

Model No.	SZ 2533.000
Version	B
Color	RAL 9011
Lock	Lock Insert: without lock cylinder insert
Suitable for enclosure type	EB BG with cam AE with cam Basic AE with cam Wall-mounted housing AE with cam
Packaging unit	1 pc(s).
Net weight	0.03 kg
Gross weight	0.038 kg
Customs tariff number	39269097
ETIM 9	EC000327
ETIM 8	EC000327

# Features

---

ECLASS 8.0

27409217

---

Product description

SZ Plastic handle, version B, without lock cylinder insert